

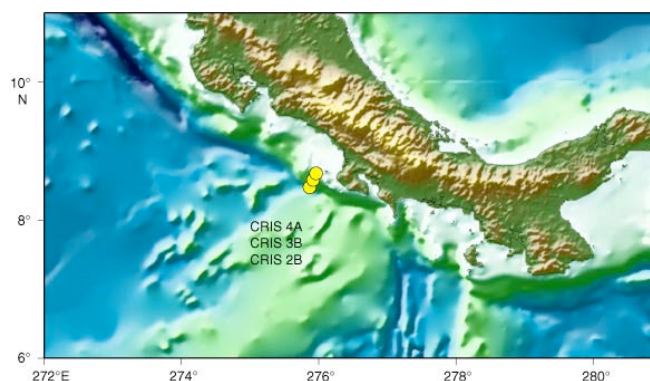


CALL

For scientists based in Europe and Canada **Costa Rica Seismogenesis Project Expedition** (March 15 – April 16, 2011) **DEADLINE May 15, 2010**

The European Consortium for Ocean Research Drilling (ECORD) offers you the unique possibility to sail in the framework of the Integrated Ocean Drilling Program (IODP), an international research program for drilling at sea.

Scientific Aims This expedition is part of a project designed to understand the processes that control nucleation and seismic rupture of large earthquakes at erosional subduction zones. It is based on a part of IODP Proposal 537-Full5. Scientific objectives include constraining the architecture, and evolution of the plate boundary megathrust and role of fluids, as well as the nature of the upper plate in a tectonically erosive margin.



Scientific Background The scientific background of this expedition is available at http://iodp.tamu.edu/scienceops/expeditions/costa_rica_seismogenesis.html.

Timing The timing of the expedition may change depending on the scheduling of non-IODP work for the drill ship, *JOIDES Resolution*.

Application Process Scientists interested in participating please consult the ESSAC webpage <http://www.essac.ecord.org/index.php?mod=user>.

Required documents (PDF only) are:

1) a CV **2)** a letter of interest including your specific expertise, previous involvement in DSDP/ODP/IODP expeditions, research interest **3)** a publication list.

Young researchers must additionally provide a letter of support from their host institution including information on the post-cruise science support: How to achieve the proposed scientific objectives in the future (funding scheme and support from host institution).

Please send a copy of your application documents to your national office/delegate in order they can help to support your application (offices and delegates at ESSAC webpage, under "about ESSAC").

For further information or questions please contact:



ESSAC Office

ECORD Science Support & Advisory Committee
AWI - Alfred Wegener Institute for Polar and Marine Research
Am Alten Hafen 26
27568 Bremerhaven, Germany
Tel: +49 (0)471 4831 2252 /-1576

Email: essac.office@awi.de

Web Page: <http://www.essac.ecord.org>

Sailing Applicant: <http://www.essac.ecord.org/index.php?mod=user>

Tutorial: <http://www.essac.ecord.org/index.php?mod=user&page=tutorialregister>