

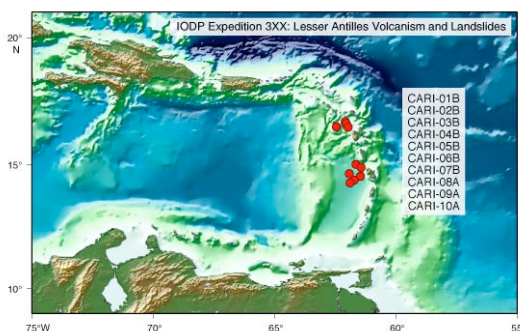


CALL

For scientists based in Europe and Canada **Lesser Antilles Volcanism and Landslides Expedition** (January - March, 2012) **DEADLINE May 1, 2011**

The European Consortium for Ocean Research Drilling (ECORD) offers you the unique possibility to sail in the framework of the Integrated Ocean Drilling Program (IODP), an international research program for drilling at sea.

Scientific Aims Based on IODP Proposal 681-Full2, this expedition will investigate the constructive and destructive processes of volcanic arcs by drilling sites along the Lesser Antilles Arc. The primary objectives are (1) to characterize the processes and timing of eruptive activity along the arc, (2) to reconstruct volcanism during the early marine and subaerial stages of volcano construction, (3) to identify the mechanisms controlling triggering, transport, and deposition of submarine debris avalanches from collapsing island volcanoes, and (4) to assess the role of erosion, fragmentation and incorporation of sediments and water in debris avalanche mobility with implications for risk assessments.



Scientific Background The scientific background of this expedition is available at http://iodp.tamu.edu/scienceops/expeditions/antilles_volcanism_landslides.html.

Timing The timing of the expedition may change depending on the scheduling of non-IODP work for the drill ship, *JOIDES Resolution*.

Application Process Scientists interested in participating please consult the ESSAC webpage <http://www.essac.ecord.org/index.php?mod=user>.

Required documents (PDF only) are:

1) a CV **2)** a letter of interest including your specific expertise, previous involvement in DSDP/ODP/IODP expeditions, research interest **3)** a publication list.

Young researchers must additionally provide a letter of support from their host institution including information on the post-cruise science support: How to achieve the proposed scientific objectives in the future (funding scheme and support from host institution).

Please send a copy of your application documents to your national office/delegate in order they can help to support your application (offices and delegates at ESSAC webpage, under "about ESSAC").

For further information or questions please contact:



ESSAC Office

ECORD Science Support & Advisory Committee
AWI - Alfred Wegener Institute for Polar and Marine Research
Am Alten Hafen 26
27568 Bremerhaven, Germany
Tel: +49 (0)471 4831 2252 /-1576
Email: essac.office@awi.de
Web Page: <http://www.essac.ecord.org>

Sailing Applicant: <http://www.essac.ecord.org/index.php?mod=user>

Tutorial: <http://www.essac.ecord.org/index.php?mod=user&page=tutorialregister>