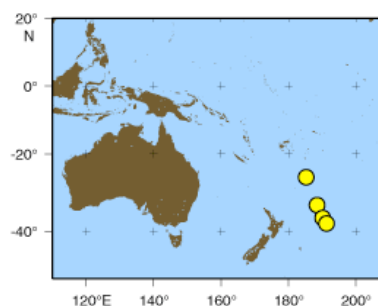




**CALL**  
For scientists based in Europe and Canada  
**Louisville Seamount Chain Expedition**  
(December 2010 - February 2011)  
**DEADLINE January 15, 2010**

The European Consortium for Ocean Research Drilling (ECORD) offers you the unique possibility to sail in the framework of the Integrated Ocean Drilling Program (IODP), an international research program for drilling at sea.

**Scientific Aims** This expedition is designed to examine (i) the possible motion of the Louisville hotspot and its geodynamical implications, and (ii) the eruptive cycle and geochemical evolution of this seamount trail. This drilling program will replicate the ODP Leg 197 drilling experiment by matching the ages of the proposed drill sites (as closely as possible) to the ages of Detroit, Suiko, Nintoku and Koko seamounts in the Emperor chain, allowing us to directly compare paleolatitude estimates between the two longest-lived hotspot systems in the Pacific. Both objectives will provide important data to investigate the possible link between the Louisville mantle plume and the formation of the Ontong Java Plateau. Finally, the thin cover of sediments on these guyots may provide additional information on the subsidence history of the Louisville seamounts and guyots, as well as a valuable Southern Hemisphere paleoclimate record. These objectives can be addressed by drilling at least 350 m into igneous basement at three small and one larger Louisville guyots.



**Scientific Background** The scientific background of this expedition is available at [http://iodp.tamu.edu/scienceops/expeditions/louisville\\_seamounts.html](http://iodp.tamu.edu/scienceops/expeditions/louisville_seamounts.html)

**Timing** The timing of the expedition may change depending on the scheduling of non-IODP work for the drill ship, *JOIDES Resolution*.

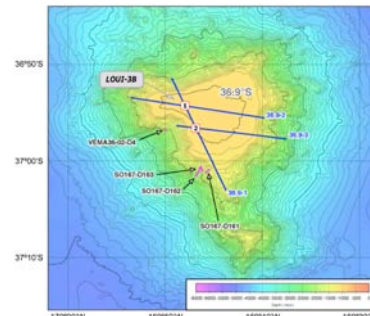
**Application Process** Scientists interested in participating please consult the ESSAC webpage <http://www.essac.ecord.org/index.php?mod=user>.

Required documents (PDF only) are:

- 1)** a CV
- 2)** a letter of interest including your specific expertise, previous involvement in DSDP/ ODP/ IODP expeditions, research interest
- 3)** a publication list.

Young researchers must additionally provide a letter of support from their host institution including information on the post-cruise science support: How to achieve the proposed scientific objectives in the future (funding scheme and support from host institution).

Please send a copy of your application documents to your national office/delegate in order they can help to support your application (offices and delegates at ESSAC webpage, under "about ESSAC").



**For further information or questions please contact:**



**ESSAC Office**

ECORD Science Support & Advisory Committee  
AWI - Alfred Wegener Institute for Polar and Marine Research  
Am Alten Hafen 26  
27568 Bremerhaven, Germany  
Tel: +49 (0)471 4831 2252 /-1576  
Email: [essac.office@awi.de](mailto:essac.office@awi.de)  
Web Page: <http://www.essac.ecord.org>  
Sailing Applicant: <http://www.essac.ecord.org/index.php?mod=user>  
Tutorial: <http://www.essac.ecord.org/index.php?mod=user&page=tutorialregister>