

# CALL FOR APPLICATIONS

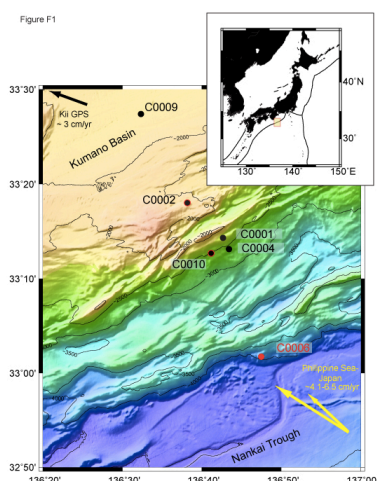
for scientists based in ECORD Member Countries to participate in

## IODP Exp. 380: NanTroSEIZE Stage 3-Frontal Thrust Long-Term Borehole Monitoring System (LTBMS)

on-board the Drilling Vessel *Chikyu* (23 October -25 December, 2017)

**DEADLINE to apply: 25 April 2017**

The Center for Deep Earth Exploration (CDEX) currently plans to implement IODP Expedition 380: NanTroSEIZE Stage 3: Frontal Thrust Long-Term Borehole Monitoring System (LTBMS) beginning on 23 October 2017. The main expedition goal is to drill and case a riserless hole at Site C0006 to at least ~500 meters below the sea floor (mbsf).



### IODP NanTroSEIZE Complex Drilling Project

The IODP Complex Drilling Project (CDP) known as the Nankai Trough Seismogenic Zone Experiment (NanTroSEIZE) Project comprises multiple expeditions over a several-year period aimed at sampling and instrumenting the up-dip transition into the subduction seismogenic zone. Site C0006 will be the site of the third LTBMS installed for the NanTroSEIZE project.

### Scientific Objectives of the expedition

The Expedition 380 goal is to install an LTBMS in the accretionary toe region near the trough axis. This is mainly an engineering expedition; there are no plans at this time to collect any logging-while-drilling (LWD) data or core samples during this expedition. However, logging data and cores from previous expeditions will be available for sample requests, with the goal of producing original research.

### Operation Plan

Operations planned for Expedition 380 include:

- Drill a new hole at Site C0006 to ca. 500 meters below sea floor (mbsf).
- Install 20-inch and 9 5/8-inch casing.
- Install the LTBMS (CORK) system at the new hole.

## Science Party

Scientific specialties that will likely be required for the shipboard science party include observatory specialists and downhole logging specialists

## Data Sharing

No data or samples will be collected. Once the LTBMS is connected to DONET, all data will be open-access later.

**For more information about the expedition science objectives and the RV Chikyu** please read the Expedition 380 mini-Prospectus and visit the website for further details.  
([http://www.jamstec.go.jp/chikyu/e/nantroseize/expedition\\_380.html](http://www.jamstec.go.jp/chikyu/e/nantroseize/expedition_380.html))

**The Application Process** is open to scientists in all ECORD member countries. Please download the *Apply to Sail* general application forms from the ESSAC webpage:

- Form Expedition 380: <http://www.ecord.org/expeditions/apply-to-sail/>

Please, fill out all applicable fields and send it to the ESSAC office by email ([essac@geomar.de](mailto:essac@geomar.de)) with the following additional documents until **25 April 2017**:

1. **A letter of interest** outlining your specific expertise, previous involvement in DSDP/ ODP/ IODP expeditions, research interests, primary research goals of your proposed participation.
2. **CV and publication list.**
3. **Young researchers** must additionally provide a **letter of support** from their host institution, including information on post-cruise science support.

All applications should state how you intend to achieve the proposed scientific objectives, with information on the funding scheme and support from your institution or national funding agencies. More information can be found under: <http://www.ecord.org/expeditions/apply-to-sail/>

In addition to the ESSAC application, all applicants must inform their national office or national delegate and send a copy of the application documents. The national offices or national delegates can also provide information regarding travel support, post-cruise funding opportunities, etc.

See <http://www.ecord.org/about-ecord/about-us/> for a list of the national contact persons.

**For further information or questions, please contact the ESSAC Office:**

ECORD Science Support & Advisory Committee  
Jan Behrmann (ESSAC Chair)  
Hanno Kinkel (ESSAC Science Coordinator)  
GEOMAR Helmholtz Centre for Ocean Research Kiel  
Email: [essac@geomar.de](mailto:essac@geomar.de) <http://www.essac.ecord.org/>  
Wischhofstr. 1-3  
D-24148 Kiel, Germany  
Tel: +49 431 600 2418  
Fax: +49 431 600 2922  
<http://www.essac.ecord.org>

