

10th Nov 00:00 – 10th Nov 24:00 EET Eastern European Time (UTC+2)

1. Location

Position 38° 8' 41.802" N, 22° 45' 30.251" E
IODP-MSP borehole M0078A
Prospectus borehole COR-02A
Water Depth: 859.50 m

2. Science Report

Coring was completed at M0078A, reaching an estimated 240 m into the lower seismic unit, and downhole logging began. Shipboard scientists held a science meeting, where they began to synthesize preliminary results from onboard core characterization by micropaleontology, geochemistry, sedimentology and physical properties, and to prepare an update to send to the rest of the expedition science party.

3. Core Recovery Details

Hole	M0078A
Cores recovered	5
Drilled length (Coring, m)	14.93
Drilled length (Open hole, m)	0
Recovered length (m)	13.39
Recovery (%)	90 %
Depth at midnight (mbsf)	610.43

4. Time Breakdown

01:25 Core on deck
04:30 Core on deck
07:50 Core on deck
10:55 Core on deck
13:35 Core on deck
13:40 Tripping pipe to 300 mbsf
18:35 Seabed template on deck
19:30 First logging tool (EM51) deployed

5. Hours (inc. cumulative total) – no contractual implications can be made from these figures

In port	0.0
Transiting	0.0
Operating	24.0
Technical downtime	0.0
Weather downtime	0.0
Other downtime (specify)	0.0

6. Weather

Sunny with highs of 18°C. Winds up to 11 km/h from a WNW direction, switching to a SSW through the afternoon, and waves of <0.2 m high.

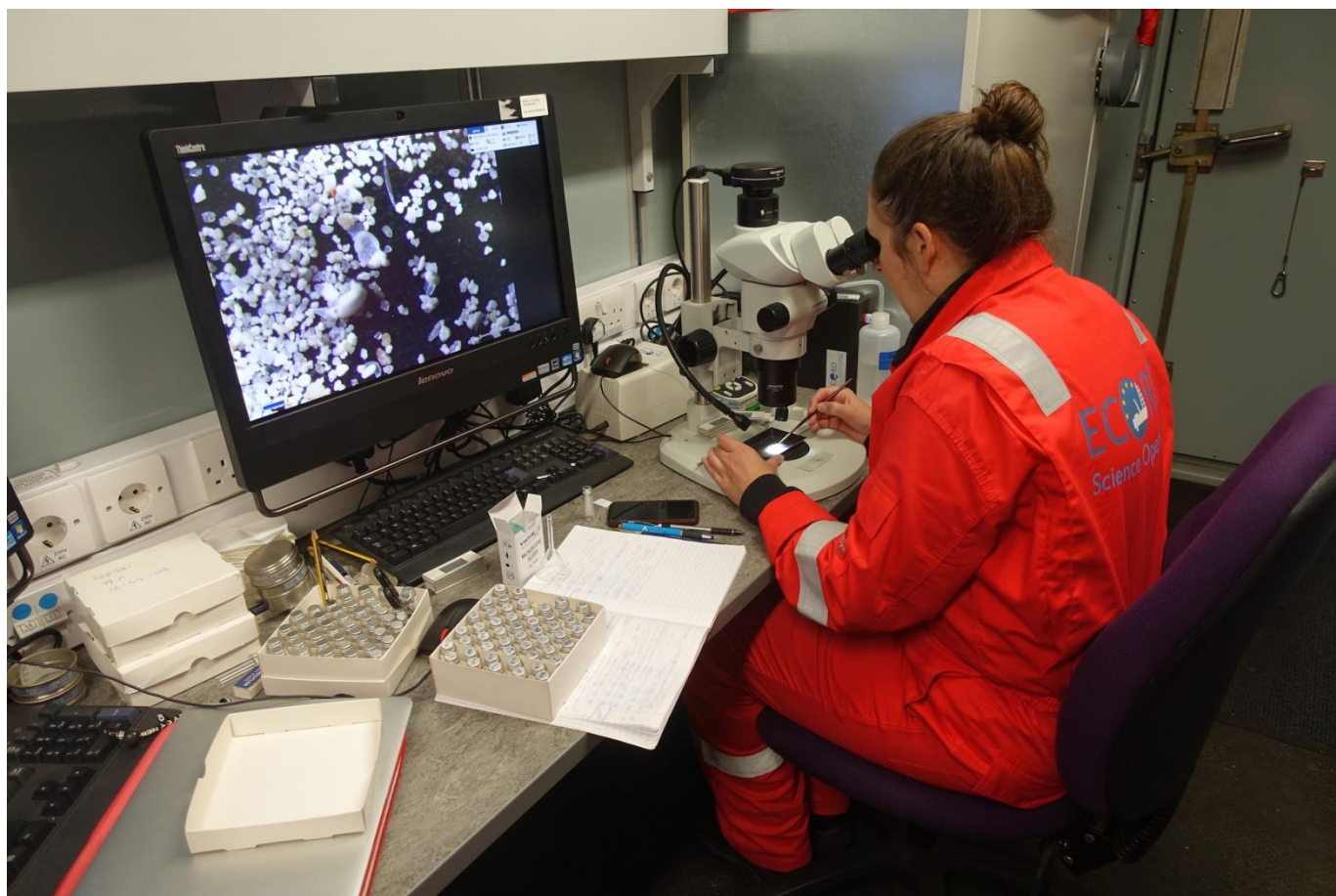
7. Planned Activity for the next 24 hours

Continue with downhole logging.

8. Health and Safety and Environmental

N/A

9. Photo of the day



Marcie Phillips - hunting for microfossils (RGawthorpe@ECORD_IODP)