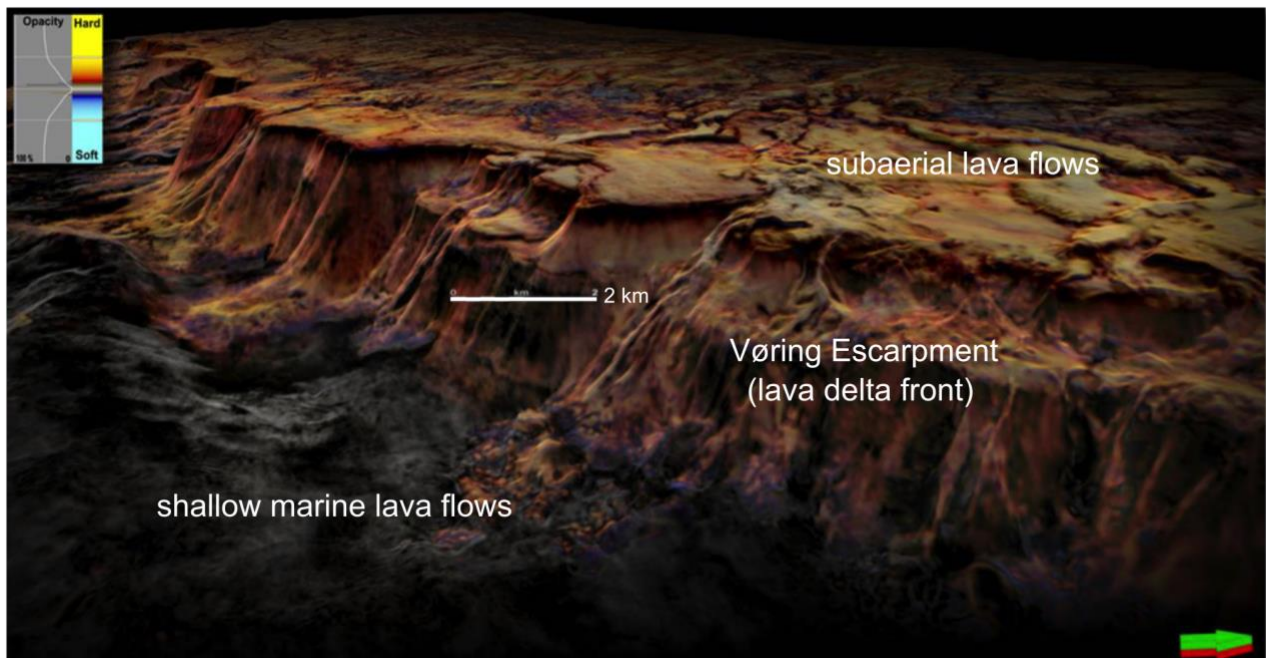


**MagellanPlus Workshop (GEOMAR, May 29-30, 2018)**

## **The North Atlantic Igneous Province continental break-up magmatism and impacts on global warming during the Paleogene**

This MagellanPlus workshop aims to develop one or more IODP proposals to distinguish between different volcanic emplacement scenarios during the opening of the North Atlantic Ocean and to determine whether volcanism related to continental break-up can cause major climate changes. The workshop will build on the three previous ODP legs that investigated volcanism related to the initial opening of the North Atlantic and will draw on the enormous amount of new geophysical data that have been collected in this part of the ocean since ODP Legs 104, 152 and 163. We invite all scientists interested in developing a new drilling proposal for the North Atlantic to join us in Kiel.



Amplitude map of the surface of the extruded magmas on the Vøring Margin. The image shows an approximately 80 km-long segment of the Vøring Escarpment buried beneath several hundred meters of sediments. This data example illustrates the power of modern 3D seismic data in selecting drilling targets in a volcanic province. The arrow indicates north. Data courtesy: Chevron. Image by A. Groth, Statoil.

### **Date and venue**

The workshop will be held at GEOMAR on May 29 and 30. GEOMAR is Germany's top research centre for marine sciences and has been host of the ESSAC office for the past three years.

To register: Please fill out the attached registration form and send it back to Anne Völsch [avoelsch@geomar.de](mailto:avoelsch@geomar.de) until **15<sup>th</sup> of March 2018** (if you do not need a hotel room through us you can register until March 30).

There number of participants is limited but we will try to accommodate as many of you as possible. Please provide a half-page statement why you are interested in the workshop to help us make a fair selection in case of too many applications.

## Workshop program

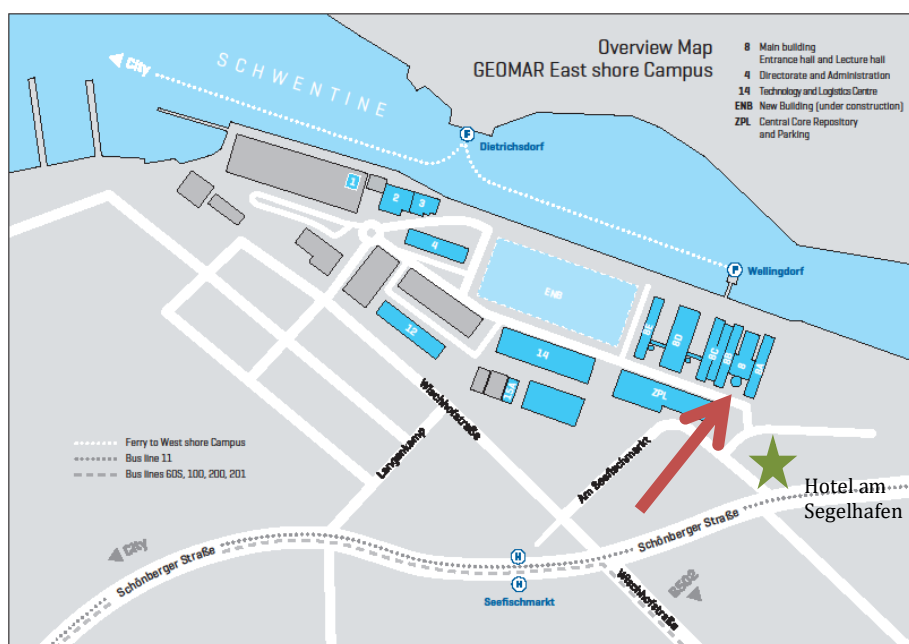
28.5.2018; 20:00: Icebreaker; Lithothek, GEOMAR, Wischhofstr. 1-3, Geb. 8, 24148 Kiel

Day 1, 29.5.2018		
Time	Talk	Speaker*
09:00	Welcome	Christian Berndt
09:30	Break-up volcanism in the NE Atlantic – Our understanding after three DSDP/ODP Legs	Mike Coffin
10:15	Coffee Break	
10:45	Plate tectonic evolution of the NE Atlantic	Trond Torsvik
11:30	The relationship between rifting and melting	Ritske Huismans
12:15	Lunch	
13:30	Guaymas basin – lessons from a modern analogue	Dan Lizarralde
14:15	Reflection seismic imaging of break-up volcanic successions	Jenny Collier
14:45	Coffee Break	
15:15	Volcanic process – Insights from subsurface data	Dougal A. Jerram
16:00	Isotope systematics of the PETM	Christian Tegner
16:30	Posters and possibility to present 1 slide introductions by participants who do not present one of the talks	
18:30	Ferry	
19:00	Dinner	
21:30	Ferry back	
Day 2, 30.5.2018		
09:00	Sediment interaction	Hendrik Svensen
09:45	Paleo-Environment of the NE Atlantic	Dave Jolley
10:15	Coffee Break	
10:45	Sedimentologic record of the PETM	Morgan Jones
11:30	Climate change during the PETM	Joost Frieling
12:00	Lunch	
13:30	An introduction to IODP's strategy and evaluation process	Damon Teagle
14:15	Site survey data for targets that develop from the previous talks	Jan Inge/Sverre Planke
15:00	Coffee Break	
15:30	Plenary discussion	
16:30	Closing remarks	
17:00	Finish	

\*some speakers have not confirmed yet, thus there may be minor changes to the programme

## Venue

The meeting will take place in the lecture hall at **GEOMAR Eastshore Campus Wischhofstr. 1-3, 24148 Kiel Building 8, main entrance**



## Accommodation

We recommend the “Hotel am Segelhafen”. It is located in walking distance from the venue (green star). We have blocked a workshop contingent of 35 rooms at a discounted price. Please

let us know **until 15<sup>th</sup> of March 2018** via our registration form, if you would like one of the reserved rooms. The price per night is 60,00€ – 70,00€ (incl. breakfast). This is first come first serve.

### Travel - Arriving by airplane



The **express shuttle** between Hamburg airport and Kiel is called KielExx. A minibus will pick you up between Terminal 1 and 2 on arrival level 0 (see airport map below) and will take you directly to your destination address in Kiel (e.g. your hotel or directly to GEOMAR). The shuttle takes *approx. 60 min.*

**IMPORTANT:** We have to book the KielExx at least a few hours in advance! Please let us know via the registration form, if you would like us to reserve a seat for you. Or call them directly at 0431/77080.

You will have to buy your ticket when entering the bus. A one way ticket costs 31,40€. Usually you can pay by credit card, but sometimes the machine does not work, so make sure to have cash on you.



### Travel - Arriving by train

You arrive at Kiel main station. All trains end here. Please take one of the busses with the numbers 60S, 11, 100, 200 or 201 and buy a single ticket (2,60€). The bus stop is located in front of the main station, please cross the street (west exit / Sophienblatt). Exit at bus stop "Seefischmarkt" and follow the signs to "GEOMAR" (see overview map).

### Contact

Please do not hesitate to contact us should you need assistance, help or if you have any other questions:

**Anne Völsch**

Phone: +49 (0) 431/600 -2271

Mail: [avoelsch@geomar.de](mailto:avoelsch@geomar.de)

**Jasmin Mögeltönder**

Phone: +49 (0) 431/600 - 2265

Mail: [jmoegeltoender@geomar.de](mailto:jmoegeltoender@geomar.de)