



**Daily Drilling and Scientific Report for IODP Expedition 386
Japan Trench Paleoseismology, 2021**



16th April 00:00 – 17th April 24:00 JST Japan Standard Time (UTC+9)

1. Location

Position 35° 47.78' N, 140° 51.35' E
IODP-MSP borehole N/A
Prospectus borehole N/A
Water Depth: N/A

2. Operations Report

The ship moved from off Inubosaki cape to off Choshi port in the morning and continued WOW all day long. The science party enjoyed a ship tour before lunch time, then had a MBES/SBP lecture and sampling discussion in the afternoon. The ship tour was led by the chief officer, showed the Bridge, Marine Mammal Watch Room, azimuth thruster rooms, the Engine Room, air compressors room, winch rooms, etc. At the lecture, lively discussion occurred to understand our survey areas. After the lecture, the science party had discussion and confirmation of sampling protocol with curatorial staff and lab tech. Meanwhile lab tech continued condition check on inclinometers, acoustic releasers, MSCL, IW analytical instruments.

3. Science Report

Co-Chief Ken Ikehara gave a lecture on basic introduction to acoustic sound surveys in order to evaluate SBP data using the recently acquired JTPS-01/02 survey lines. The survey lines show not only consistent images to previous Sonne survey but also clear image of the deeper basin at the sites. The data suggests good potential for successful coring with the 40 m GPC.

4. Core Recovery Details

Hole	N/A
Cores recovered	N/A
Drilled length (Coring, m)	N/A
Drilled length (Open hole, m)	N/A
Recovered length (m)	N/A
Recovery (%)	N/A
Depth at midnight (mbsf)	N/A

5. Time Breakdown

00:00 Continue stand-by off Inubosaki cape
06:45 Sail to off Choshi port
08:00 Arrive at stand-by point off Choshi port and WOW
11:00 Ship tour
13:30 MBES/SBP seminar
15:30 Sampling school

6. Hours (inc. cumulative total) – no contractual implications can be made from these figures

In port	10.0
Transiting	16.15
Operating	8.0
Technical downtime	0.0
Weather downtime	83.15
Other downtime (specify)	0.0

7. Weather

Fine but cloudy and ~16 degC with strong ~16 m/s southeasterly winds. Heavy rain and wind accompanied a weather front came in the night.

8. Planned Activity for the next 24 hours

Continue WOW off Choshi port. Sampling dry run.

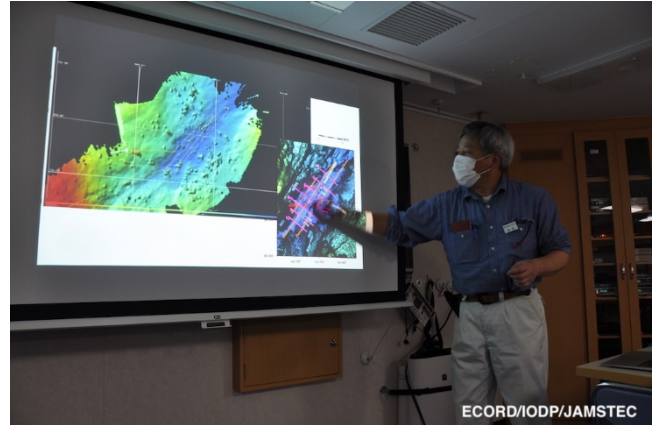
9. Health and Safety and Environmental

A scientist had sea sickness and rested in cabin.

10. Photo of the day



Scene of ship tour at Bridge (photo by NSakurai@ECORD/IODP/JAMSTEC)



MBES/SBP seminar (photo by Lena Maeda@ECORD/IODP/JAMSTEC),



Tour of engine control room (photo by TKanamatsu@ECORD/IODP/JAMSTEC)



MSCL calibration check (photo by Lena Maeda@ECORD/IODP/JAMSTEC)