



## CALL

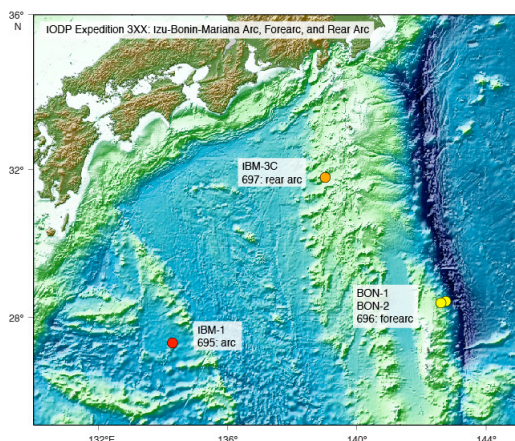
For scientists based in Europe and Canada

# 351 IODP Expedition Izu Bonin Mariana: Arc Origins

(June – July 2014)

**DEADLINE 1 May, 2013**

The European Consortium for Ocean Research Drilling (ECORD) offers you the unique possibility to sail in the framework of the Integrated Ocean Drilling Program (IODP), an international research program for drilling at sea.



Based on IODP Proposal 695-Full2, this expedition will examine the inception and evolution of the Izu-Bonin-Mariana (IBM) Arc by obtaining a sedimentary and crustal record from the Amami Sankaku Basin.

The primary objectives are (1) to examine the petrology and age of the crust to infer the geochemistry of the mantle prior to IBM arc inception and determine the mantle source of the arc foundation; (2) to obtain records of IBM arc inception and growth, late Mesozoic-early Paleogene eastern Tethys paleoceanography, and East Asian monsoon conditions during the Neogene; and (3) to determine if early uplift or subsidence was associated with subduction initiation.

**More information:** The expedition schedule is available at <http://iodp.tamu.edu/scienceops/>. The expedition web page at [http://iodp.tamu.edu/scienceops/expeditions/izu\\_bonin\\_arc.html](http://iodp.tamu.edu/scienceops/expeditions/izu_bonin_arc.html) provides the original IODP proposals and expedition planning information.

**Application Process** Scientists interested in participating, please consult the ESSAC webpage (<http://www.essac.ecord.org/index.php?mod=user>). Required documents (PDF only) are: **1)** a CV; **2)** a letter of interest including your specific expertise, previous involvement in DSDP/ ODP/ IODP expeditions, research interest; and **3)** a publication list.

Young researchers must additionally provide a letter of support from their host institution including information on the post-cruise science support: How to achieve the proposed scientific objectives in the future (funding scheme and support from host institution).

In addition to the ESSAC application, please send a copy of your application documents to your national office/delegate in order they can help to support your application, see

<http://www.essac.ecord.org/index.php?mod=about&page=ESSAC>.

**For further information or questions please contact:**



**ESSAC Office** ECORD Science Support & Advisory Committee

Instituto Andaluz de Ciencias de la Tierra, IACT (CSIC-UGR), Avda. de Las Palmeras nº 4 , 18100, Armilla, Granada, SPAIN

tel: +34 958 23 00 00 + 190130/190219 fax +34 958 55 26 20

[iact\\_essac.office@iact.ugr-csic.es](mailto:iact_essac.office@iact.ugr-csic.es)

Web Page: <http://www.essac.ecord.org>

Sailing Applicant: <http://www.essac.ecord.org/index.php?mod=user>