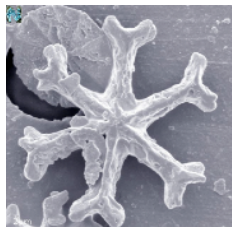
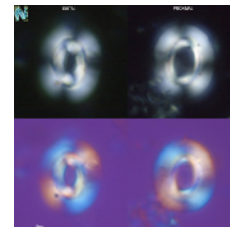


## Special Call for Applications: Nannofossil Micropaleontologist



### *JOIDES Resolution Expedition 402:* **Tyrrhenian Continent-Ocean Transition**



9 February – 8 April 2024

**DEADLINE to apply: 19 May 2023**

The **European Consortium for Ocean Research Drilling (ECORD)** offers you the unique opportunity to sail on Expedition 402 on-board the *JOIDES Resolution* in the framework of the International Ocean Discovery Program (IODP), an international research program for drilling at sea.

**Expedition 402** will investigate the temporal and spatial evolution of a continent-ocean transition (COT), from breakup to robust magmatism and subsequent mantle exhumation with closely time-related magmatism. The Tyrrhenian basin is the youngest basin of the Western Mediterranean, forming in the late Miocene to recent by continental extension related to rollback of the ESE-migrating Apennine subduction system. Recent geophysical and seismic data support the presence of magmatic rocks formed during the early COT phase, and of subsequently exhumed mantle. The drilling program of Expedition 402 is designed to target six sites along a west-east and north-south transect. Coring operations at each site will recover the complete sediment section including Messinian deposits, the sediment-basement interface, and peridotitic basement, followed by downhole logging. The recovered material and data will address the primary cruise objectives, which include the kinematics of the opening, the timing and origin of associated magmatism, the crust and mantle deformation mechanisms, and the relationship of melting products to the exhumed mantle.

**Nannofossil biostratigraphy** is crucial to the expedition objectives, in particular to date the oldest sediment at each site and to constrain the tectonic evolution from the sedimentation history. Recovered sediment will additionally facilitate paleoceanography and micropaleontology research programs.

For more information on the expedition science objectives see

[https://iodp.tamu.edu/scienceops/expeditions/tyrrhenian\\_continent\\_ocean\\_transition.html](https://iodp.tamu.edu/scienceops/expeditions/tyrrhenian_continent_ocean_transition.html).

This page includes links to the individual expedition web pages with the original IODP proposals and expedition planning information.

**Who Should Apply for the Expedition 402 Special Call:** We encourage applications from all qualified scientists (including graduate students) with experience in **Neogene calcareous nannofossil assemblages** and biostratigraphy. ECORD is committed to a policy of broad participation and inclusion, and to providing a safe, productive, and welcoming environment for all program participants. Good working knowledge of the English language is required.

**The Application Process** is open to scientists in all ECORD member countries. Please download the *Apply to Sail* general application form from the ESSAC webpage:

<http://www.ecord.org/expeditions/apply-to-sail/>

Please, fill out all applicable fields and send the form to the ESSAC office by email ([essac@ogs.it](mailto:essac@ogs.it)) with the following additional documents by the deadline of **19 May 2023**:

1. **A letter of interest** outlining your specific expertise, previous involvement in DSDP/ ODP/ IODP expeditions, research interests, primary research goals of your proposed participation.
2. **CV and publication list.**
3. **Early career researchers** must additionally provide a **letter of support** from their host institution, including information on post-cruise science support.

All applications should state how you intend to achieve your proposed scientific objectives, with information on the funding scheme and support from your institution or national funding agencies. More information can be found under: <http://www.ecord.org/expeditions/apply-to-sail/>

In addition to the ESSAC application, all applicants *must inform their national office or national delegate* and send them a copy of their application documents. The national offices or national delegates can also provide information regarding travel support, post-cruise funding opportunities, etc.

See <http://www.ecord.org/about-ecord/about-us/> for a list of the national contact persons.

**For further information or questions, please contact the ESSAC Office:**

**ECORD Science Support & Advisory Committee**

Angelo Camerlenghi (ESSAC Chair)

Hanno Kinkel (ESSAC Science Coordinator)

Istituto Nazionale di Oceanografia e di Geofisica Sperimentale - OGS

via Beirut n. 2

34151 Trieste - Italia

e-mail: [essac@ogs.it](mailto:essac@ogs.it)

website: [www.ecord.org](http://www.ecord.org)

