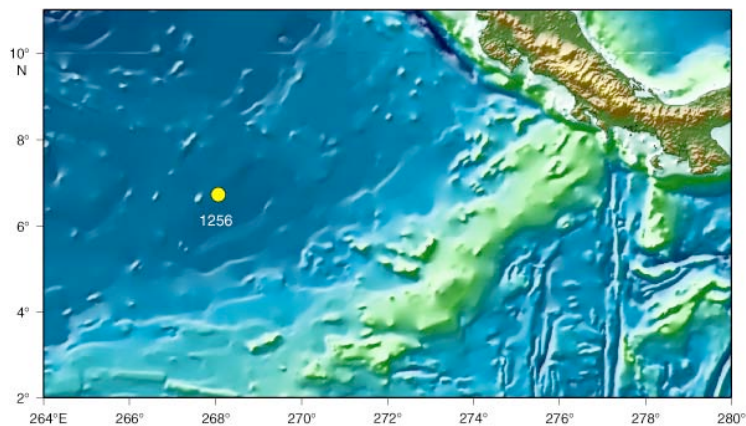




**CALL**  
**For scientists based in Europe and Canada**  
**Superfast Crust 4 Expedition**  
**(April 16 – May 19, 2011)**  
**DEADLINE May 15, 2010**

The European Consortium for Ocean Research Drilling (ECORD) offers you the unique possibility to sail in the framework of the Integrated Ocean Drilling Program (IODP), an international research program for drilling at sea.

**Scientific Aims** Based on the results of three previous expeditions (206, 309, 312) and the subsequent IODP Proposal 522-Full5, this expedition aims to continue the mission to understand the accretion of oceanic crust formed at a superfast spreading rate at the East Pacific Rise. Previous drilling in Hole 1256D reached a total penetration of 1506 m, including 1250 m into the igneous crust. The hole passed through 345 m of sheeted dikes and continued 100 m into gabbroic rock. This new expedition will deepen Hole 1256D as far as possible into gabbro to complete coring and logging of an entire upper to mid-oceanic crustal section.



The primary objectives are to (1) test models of mid-ocean ridge crustal accretion, (2) establish magmatic, hydrothermal, and tectonic processes and interactions, (3) determine the geological nature of layer 3 and the layer 2/3 boundary, and (4) constrain the magnetic contribution of the lower crust to marine magnetic anomalies.

**Scientific Background** The scientific background of this expedition is available at [http://iodp.tamu.edu/scienceops/expeditions/superfast\\_rate\\_crust.html](http://iodp.tamu.edu/scienceops/expeditions/superfast_rate_crust.html).

**Timing** The timing of the expedition may change depending on the scheduling of non-IODP work for the drill ship, *JOIDES Resolution*.

**Application Process** Scientists interested in participating please consult the ESSAC webpage <http://www.essac.ecord.org/index.php?mod=user>.

Required documents (PDF only) are:

**1)** a CV **2)** a letter of interest including your specific expertise, previous involvement in DSDP/ ODP/ IODP expeditions, research interest **3)** a publication list.

Young researchers must additionally provide a letter of support from their host institution including information on the post-cruise science support: How to achieve the proposed scientific objectives in the future (funding scheme and support from host institution).

Please send a copy of your application documents to your national office/delegate in order they can help to support your application (offices and delegates at ESSAC webpage, under "about ESSAC").

**For further information or questions please contact:**



**ESSAC Office**

ECORD Science Support & Advisory Committee

AWI - Alfred Wegener Institute for Polar and Marine Research

Am Alten Hafen 26

27568 Bremerhaven, Germany

Tel: +49 (0)471 4831 2252 /-1576

Email: [essac.office@awi.de](mailto:essac.office@awi.de)

Web Page: <http://www.essac.ecord.org>

Sailing Applicant: <http://www.essac.ecord.org/index.php?mod=user>

Tutorial: <http://www.essac.ecord.org/index.php?mod=user&page=tutorialregister>