

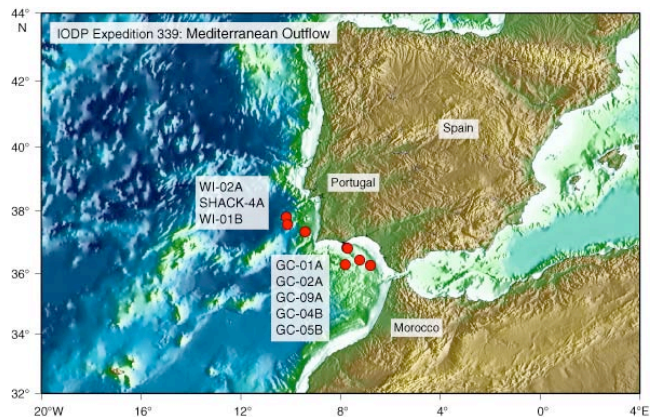


CALL
for scientists based in Europe and Canada
Mediterranean Outflow Expedition
with *JOIDES Resolution*
(November 20, 2011 – January 20, 2012)
DEADLINE January 03, 2011

The European Consortium for Ocean Research Drilling (ECORD)
offers you the unique possibility to sail in the framework of the
Integrated Ocean Drilling Program (IODP),
an international research program for drilling at sea.

Scientific Aims and Background This expedition (based on IODP Proposal 644-Full) will address the importance of ocean gateways in regional and global ocean circulation and climate by coring and logging seven sites on the contourite depositional system (CDS) in the Gulf of Cadiz and the West Iberian Margin. The primary objectives are (1) to reconstruct the long-term variability of Mediterranean Outflow Water (MOW) and impact of sea level change on MOW since the Miocene, (2) to evaluate the role of the Gibraltar Gateway on North Atlantic Ocean circulation and global climate, and (3) to document syn-sedimentary neotectonic controls on architecture and evolution of the CDS.

This expedition will also address the scientific objectives of IODP Proposal 763-APL that aims to produce a marine reference section of Plio-Pleistocene millennial-scale climate variability and changes in surface and deep-water circulation along the Portuguese Margin. Records from this reference section will constrain the temporal relationships of abrupt climate change recorded in the northeast Atlantic Ocean, the polar ice cores, and European terrestrial records.



Timing The timing of the expedition may change depending on the scheduling of non-IODP work for the drill ship, *JOIDES Resolution*. The current expedition schedule is available at <http://iodp.tamu.edu/scienceops/>. The schedule provides links to the individual expedition pages, including planning information and the original IODP proposals 644-Full and 763-APL.

Application Process Scientists interested in participating please consult the ESSAC webpage <http://www.essac.ecord.org/index.php?mod=user>. Required documents (PDF only) are:

1) a CV **2)** a letter of interest including your specific expertise, previous involvement in DSDP/ ODP/ IODP expeditions, research interest **3)** a publication list.
Young researchers must additionally provide a letter of support from their host institution including information on the post-cruise science support: How to achieve the proposed scientific objectives in the future (funding scheme and support from host institution).

Please send a copy of your application documents to your national office/delegate in order they can help to support your application, see <http://www.essac.ecord.org/index.php?mod=about&page=ESSAC>.

For further information or questions please contact:



ESSAC Office

ECORD Science Support & Advisory Committee
AWI - Alfred Wegener Institute for Polar and Marine Research
Am Alten Hafen 26
27568 Bremerhaven, Germany
Tel: +49 (0)471 4831 2252 /-1576
Email: essac.office@awi.de
Web Page: <http://www.essac.ecord.org>
Sailing Applicant: <http://www.essac.ecord.org/index.php?mod=user>

Tutorial: <http://www.essac.ecord.org/index.php?mod=user&page=tutorialregister>