

Daily Coring and Scientific Report for IODP Expedition 389 Hawaiian Drowned Reefs

25th October 00:00 - 24:00 HST Hawaii Standard Time (UTC -10)



1. Location at 24:00

Position: 20°02.9161'N, 156°11.549'W

Water Depth: ~ 1178 m

2. Operations Report

Day 2 on M108B provided a mixed bag of core run lengths, caused in part by varying amounts of apparent “gravelly” ground. Two short runs of wash boring were introduced to allow casing to be set below these areas. These proved to be prudent decisions as good core runs followed immediately after.

3. Science Report

MSCL logging and lithological descriptions were completed for Holes M107A and M108A.



4. Core Recovery Details

Hole	M108B
Cores recovered	N/A
Drilled length (Coring, m)	13.05
Drilled length (Open hole, m)	3.01
Recovered length (m)	N/A
Recovery (%)	N/A
Depth at midnight (mbsf)	21.11

5. Time Breakdown

00:00 – 24:00 Advance borehole M108B to 21.11 mbsf by rotary coring with two short intervals of wash boring between 6.43 to 7.50 mbsf and 10.40 to 11.55 mbsf.

6. Hours – no contractual implications can be made from these figures

In port	0.0
Transiting	0.0
Operating	24.0
Downtime	0.0
Weather downtime	0.0
Mobilisation	0.0

7. Weather

Sunny with excellent visibility. Wave heights of 0.1 – 0.4 m and swell 0.2 – 0.8 m; wind direction variable at 2 – 11 kts, gusting 3 - 14 kts; Temperature 25 - 26°C.

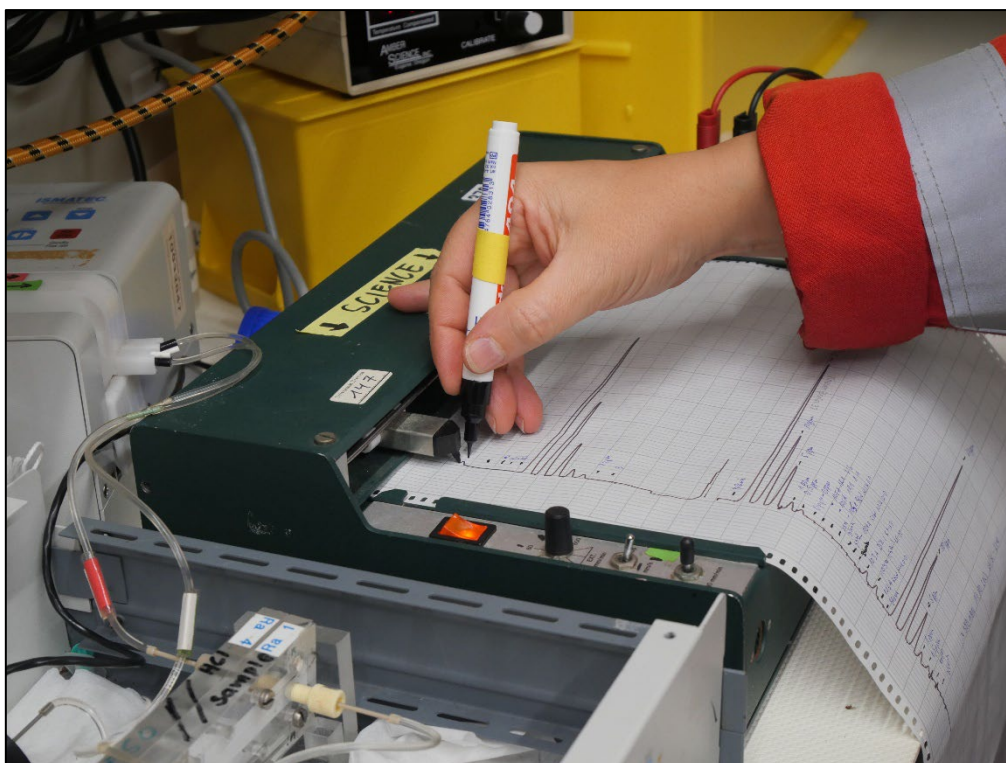
8. Planned Activity for the next 24 hours

- Continue coring operations at Site M108.

9. Health and Safety and Environmental

- Toolbox talks at 11:30 and 23:30 for all on shift. EPM and Ops Manager attended Contractor Toolbox talk at 11.45 and EPM at 23:50. Information disseminated to remainder of Science Party.

10. Photo(s) of the day



ESO Geochemist Luzie Schnieders analyzing ammonium with the gas separation method on the ammonium line. Photo by MarisaRydzy@ECORD_IODP.