

Expedition Log for IODP Expedition 313 New Jersey Shallow Shelf

Week 4 - 26th May

Staff scientist Carol Cotterill settles in to life aboard the ship.

The fourth week of operations on Expedition 313 was the week I joined the platform, taking over from Dave McInroy as Staff Scientist. So what have I done on my first week?.....

The first photo taken was of Dave disappearing on the Billy Pugh as I relieved him after a 4 hour handover period! Note the nice sunny day and blue skies – that wasn't to last for the whole week unfortunately.



Photo 1. The staff scientists change-over. (Carol Cotterill©ECORD/IODP)

When I arrived, the wireline logging and VSP logging were still being undertaken at Hole MAT-1A (M0027A). There is already an entry in the Expedition logbook describing the process of logging written by Simon Barry. Suffice to say there were numerous tools, winches and cables on the drill floor!



Photo 2. Vanessa lowers a wireline tool into the pipe (*Jenny Inwood©ECORD/IODP*)



Photo 3. Lucas Duerksen retrieving the airguns used during VSP logging (*Carol Cotterill©ECORD/IODP*)

We began a preliminary evaluation of all the datasets acquired at MAT-1A, to try and better guide our logging and coring strategy at the next hole. During one science meeting, it was suggested that a poster was compiled of as many datasets as possible. This was to summarise the wireline logging information, MSCL data, geochemistry, microbiology sample points, a preliminary stratigraphic interpretation and the core recovery log. Once produced, a second science meeting examining these data led to some interesting discussions!

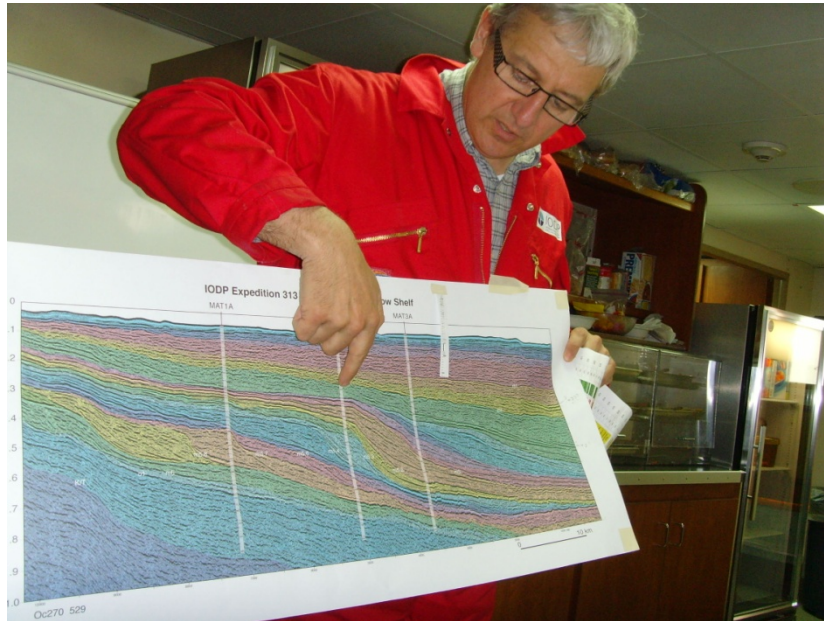


Photo 4. Co-chief scientist Jean-Noel Proust discussing the seismic section at science meeting one (Jenny Inwood©ECORD/IODP)



Photo 5. The second science meeting and a rather large poster has appeared! (Jenny Inwood©ECORD/IODP)

By this time we were on the next station, Hole MAT-2D (M0028A). Activity to case and drill the hole began as soon as the vessel had been jacked up and pre-loaded – allowed to settle for approximately 12 hours to ensure all the legs were distributing the weight evenly, that the seafloor was stable and that the platform would remain level. Once started, operations are 24 hour, with two shifts working 6am – 6pm, and 6pm – 6am.



Photo 6. Observing the night's activity on the drill floor (*CarolCotterill©ECORD/IODP*)



Photo 7. Beginning to case Hole MAT-2D (M0028A) – Shaun, Beau and Jay, DOSECC
(*Carol Cotterill©ECORD/IODP*)

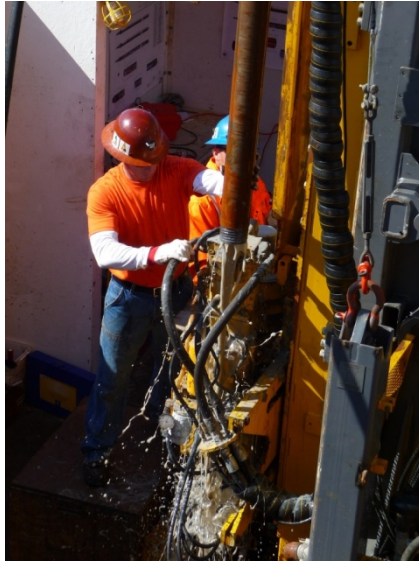


Photo 8. Beau Marshall, DOSECC, tripping a pipe (*CarolCotterill©ECORD/IODP*)

And of course there was the Saturday night B-B-Q!! Ali has just seen the size of the steaks.....



Photo 9. B-B-Q time! (*CarolCotterill©ECORD/IODP*)