



Eugene Petrov

Adviser

Federal Agency for the Subsoil Use
(ROSNEDRA)

MAIN ACTIVITIES of the Federal Agency for Subsoil Use in 2015



Federal Agency for the Subsoil Use (ROSNEFRA)

The Federal Agency for the Subsoil Use is a federal body of executive authority responsible for providing state services, managing state property, and for legal regulation in the sphere of subsoil use.

The Federal Agency for the Subsoil Use has the following functions:

- to organise regeneration and rational use of the mineral and raw material base;
- to study the geological subsoil on the territory of the Russian Federation and on the continental shelf of the Russian Federation;
- to maintain a federal and a territorial data bank on geological information on subsoil, as well as a data bank on subsoil use;
- to manage, within its sphere of competence, federal property in the sphere of subsoil use, including managing the State Subsoil Fund;
- to maintain a state cadastre of deposits and occurrences of minerals, to keep a state inventory of works involved in the geological exploration of subsoil and its sections made available for the extraction of minerals and for purposes unrelated to their production, and their inclusion in a state register, as well as to compile a state balance sheet of mineral resources and to monitor the condition of subsoil;
- to provide the right to use subsoil in an established manner;
- to render state services connected with: a geological, economic, and cost-based assessment of mineral deposits and subsoil sections in accordance with the established procedure; a state examination of mineral reserves and geological and economic information on subsoil sections made available for exploitation, and the provision of design and estimates documentation on the geological exploration of subsoil.

MAIN FIELDS OF THE AGENCY ACTIVITIES

PRINCIPAL FUNCTION:

Management of the state fund of mineral resources

State is the owner of mineral resources and provides only the right to use them

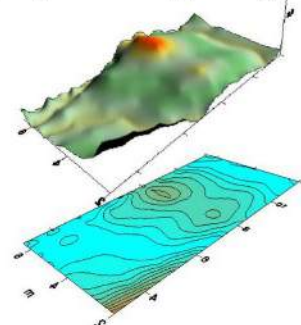
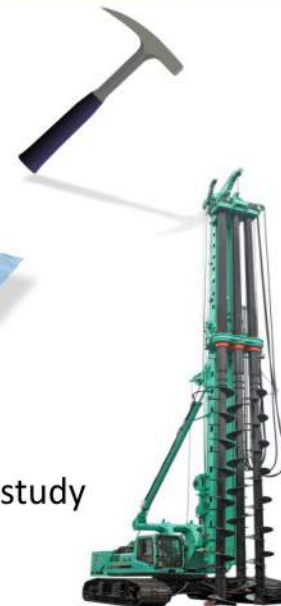
Organization of the state geological study of the subsurface and work on the raw material base rehabilitation

Organizational support of the state licensing of subsoil use

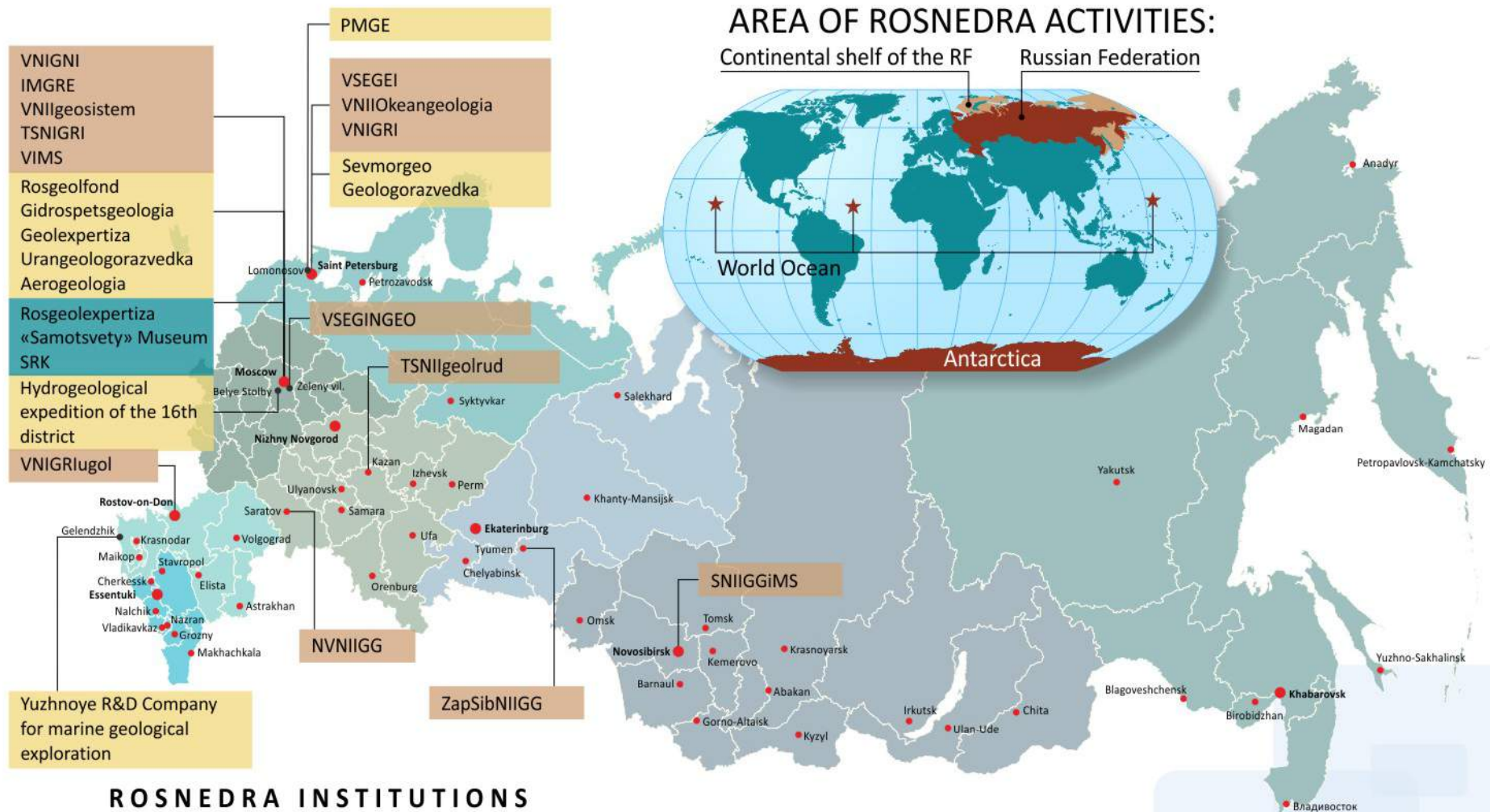
Organization of the state examination of projects on geological study of mineral resources, mineral reserves

Consideration and approval of project documentation for mining

Collection, storage, and provision for use of the geological information

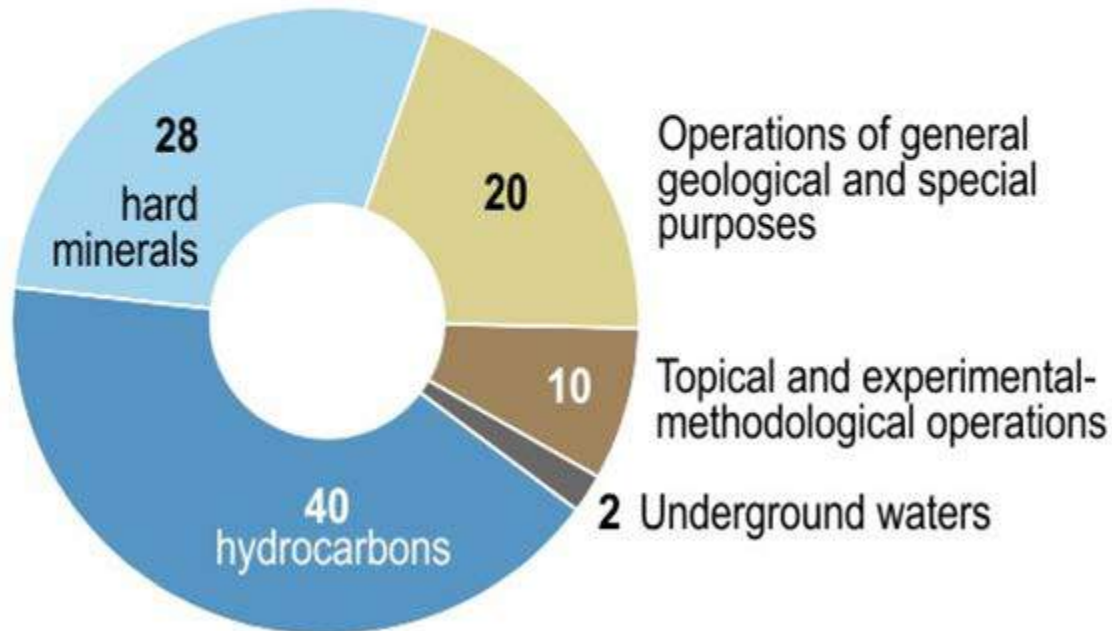


STRUCTURE AND ACTIVITY AREA OF THE AGENCY



STRUCTURE OF EXPENSES FOR GEOLOGICAL INVESTIGATION OF SUBSOIL AND MINERAL RESERVES REPLACEMENT AT THE EXPENSE OF THE FEDERAL BUDGET

Expenses, %





Eugene Petrov

Adviser

Federal Agency for the Subsoil Use
(ROSNEDRA)

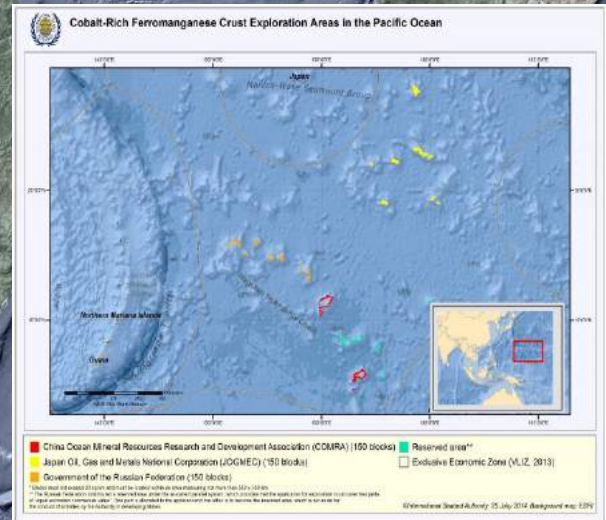
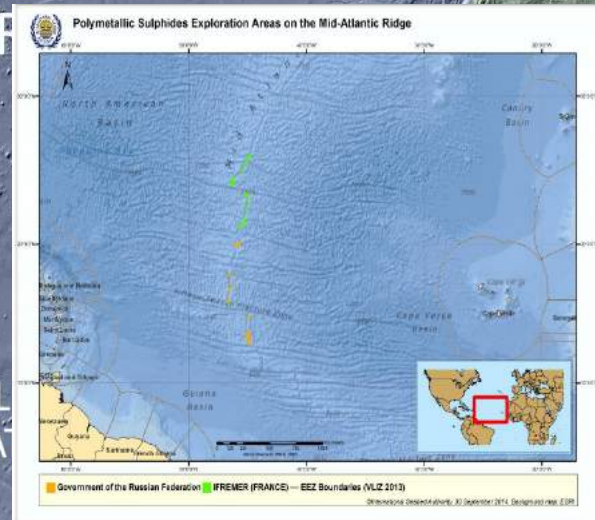
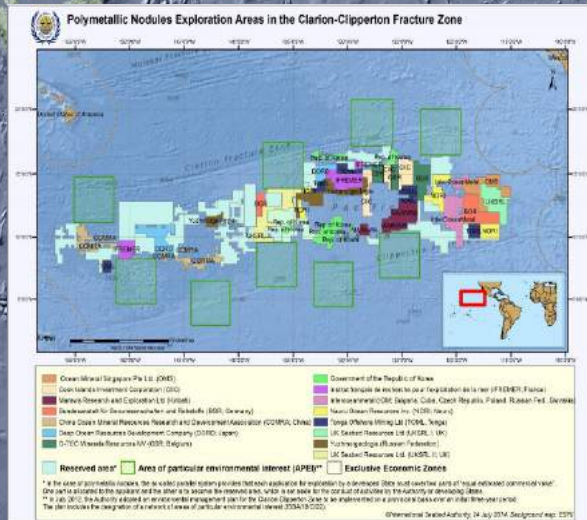
AREAS OF OFFSHORE GEOEXPLORATION OPERATIONS

EXPLORATION FOR POLYMETALLIC NODULES, POLYMETALLIC SULPHIDES AND COBALT-RICH FERROMANGANESE CRUSTS IN THE DEEP SEABED

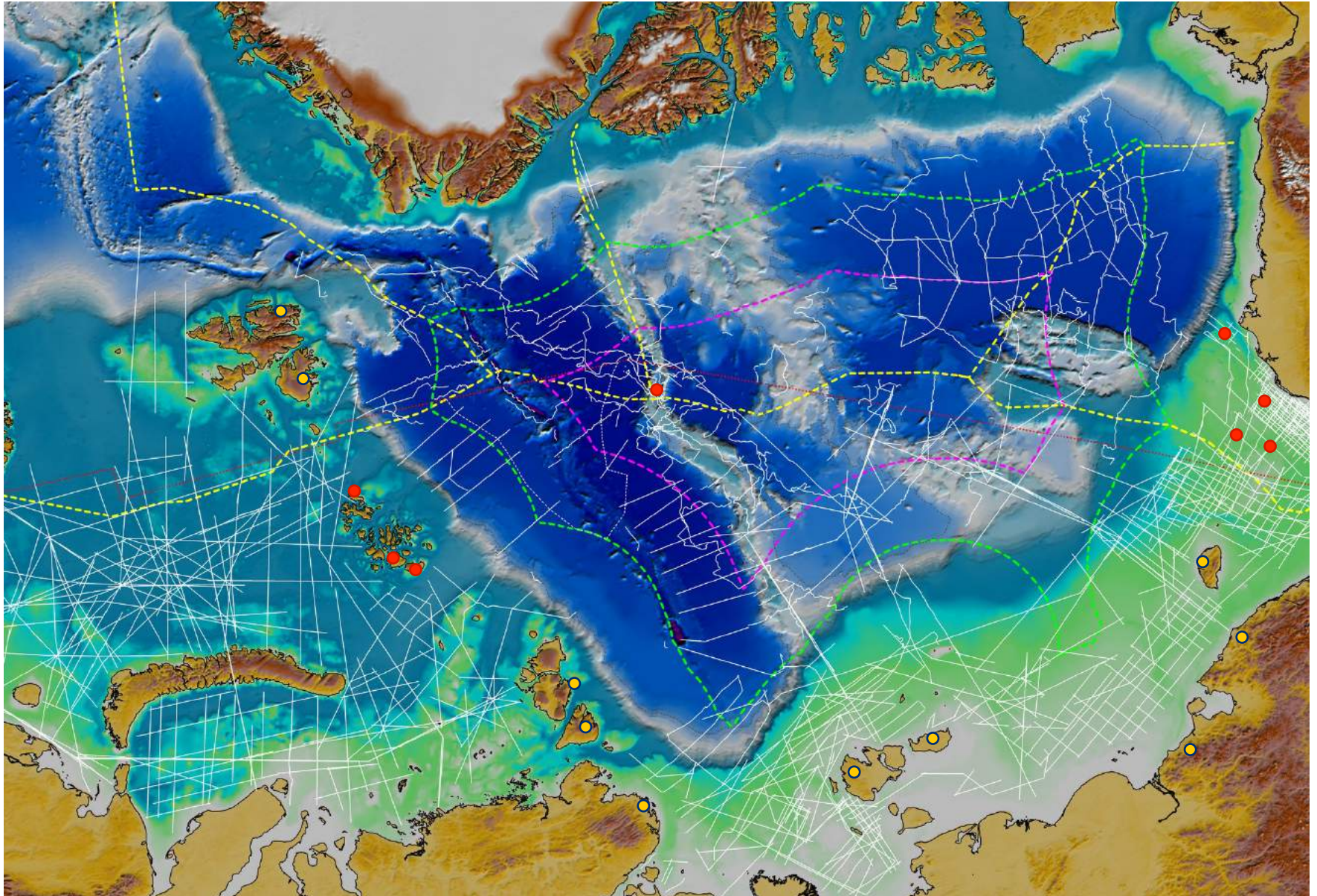
KMK
cobalt-manganese
crusts

ЖМК
ferromanganese
nodules
P₁ - 28.2 mln.t
(plan – 25.0 mln.t)

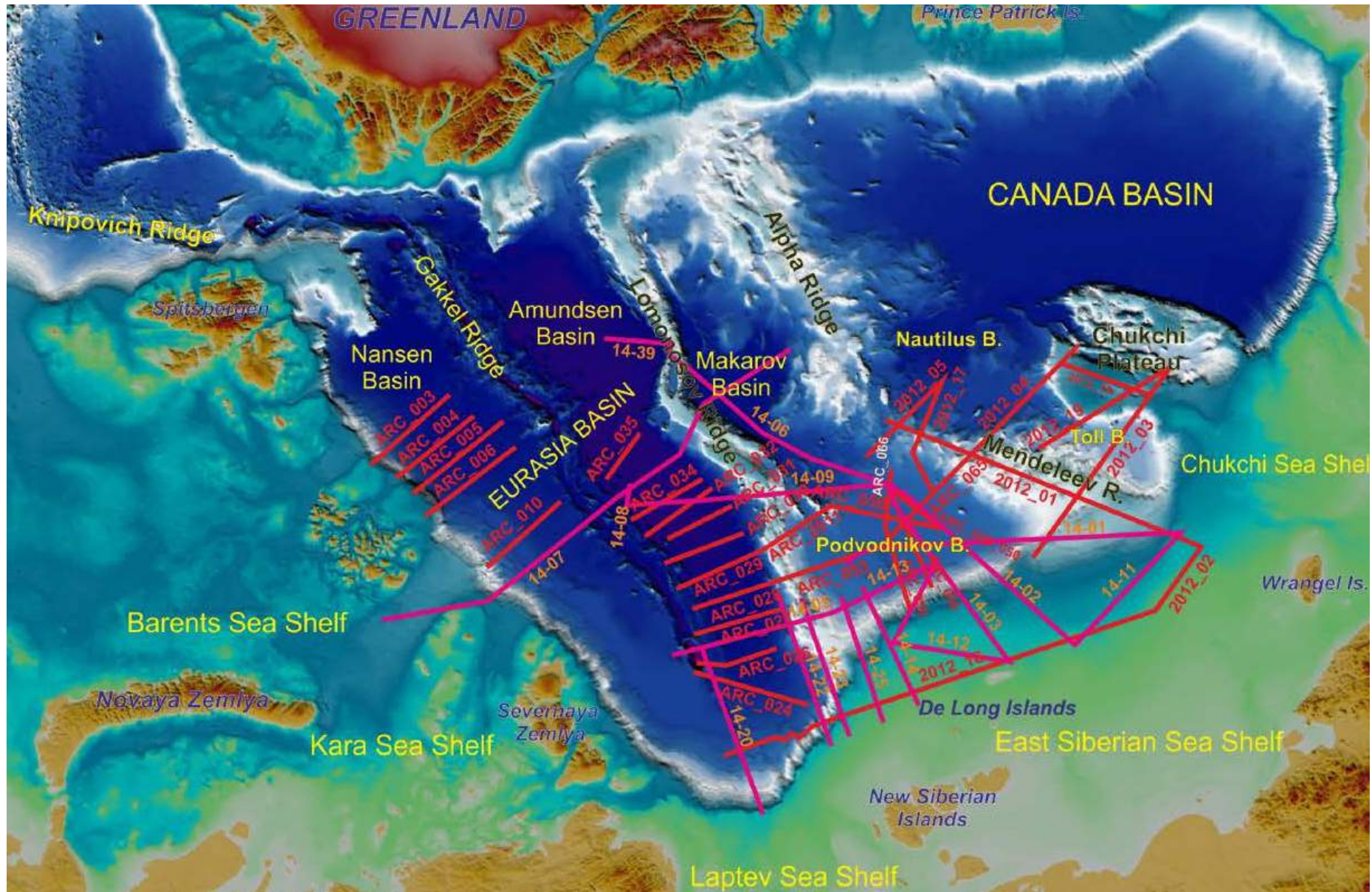
ГПС
suboceanic
polymetallic sulfides
P₂ - 3.0 mln.t
(plan – 3.0 mln.t)



2D SEISMIC DATA COVERAGE IN CENTRAL ARCTIC



2D SEISMIC DATA COVERAGE IN CENTRAL ARCTIC



2D SEISMIC OPERATION IN CENTRAL ARCTIC

Arctic - 2011



Arctic - 2012



Arctic - 2010



Arctic - 2005

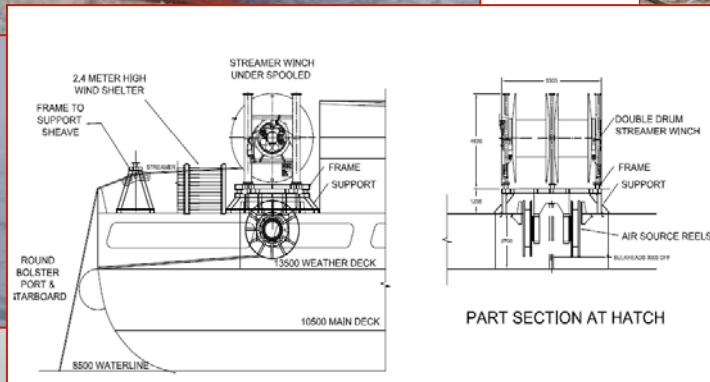


Arctic - 2014

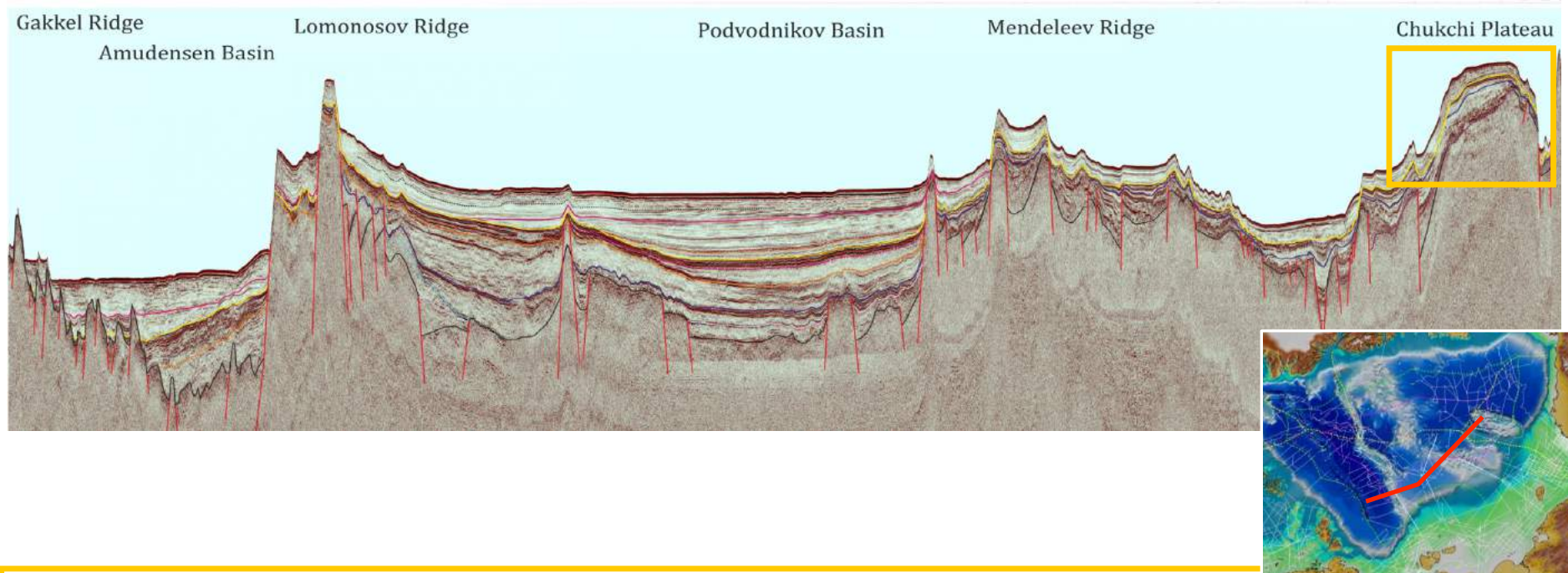


Arctic - 2007

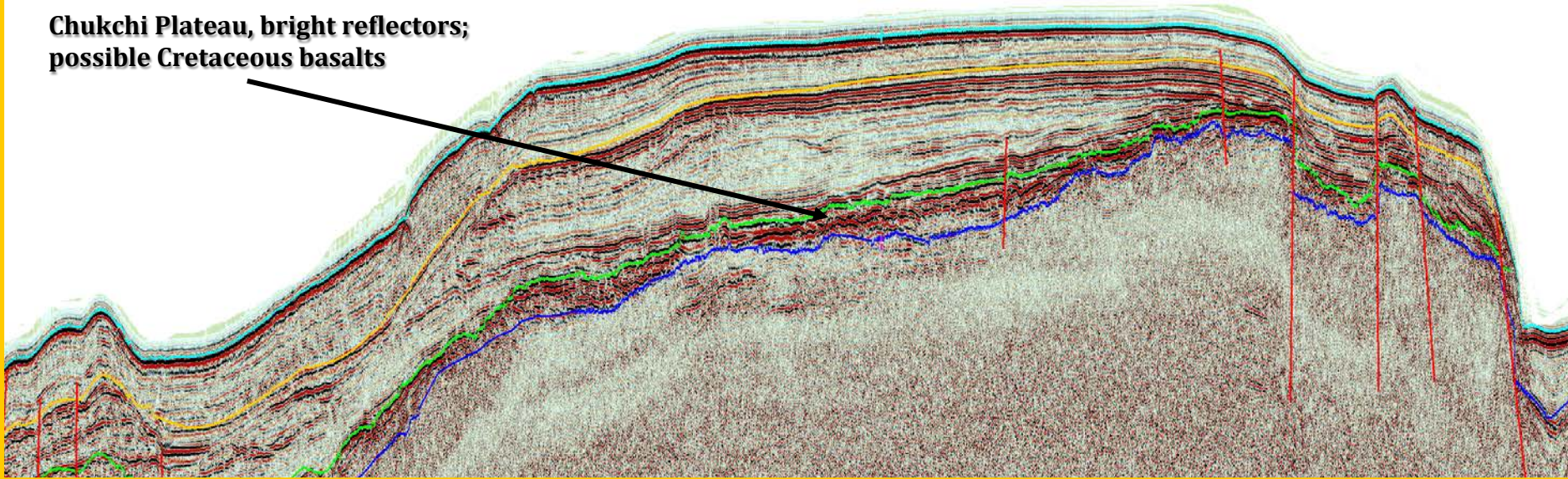




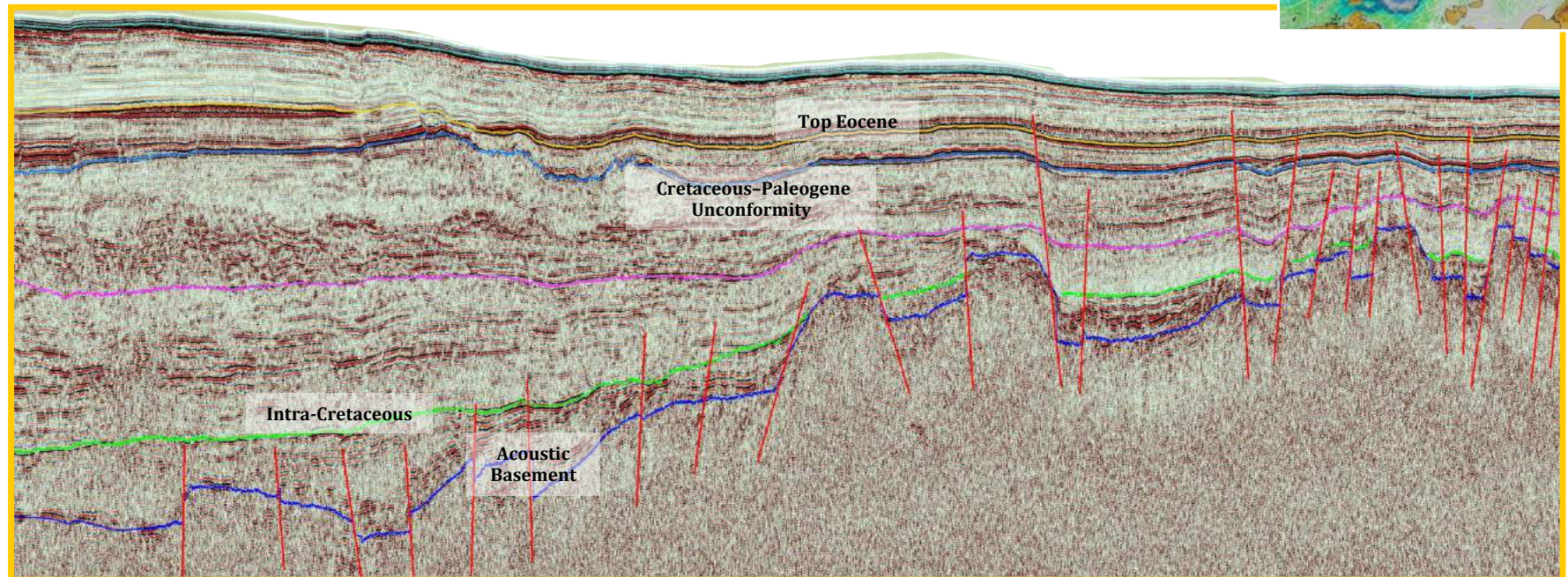
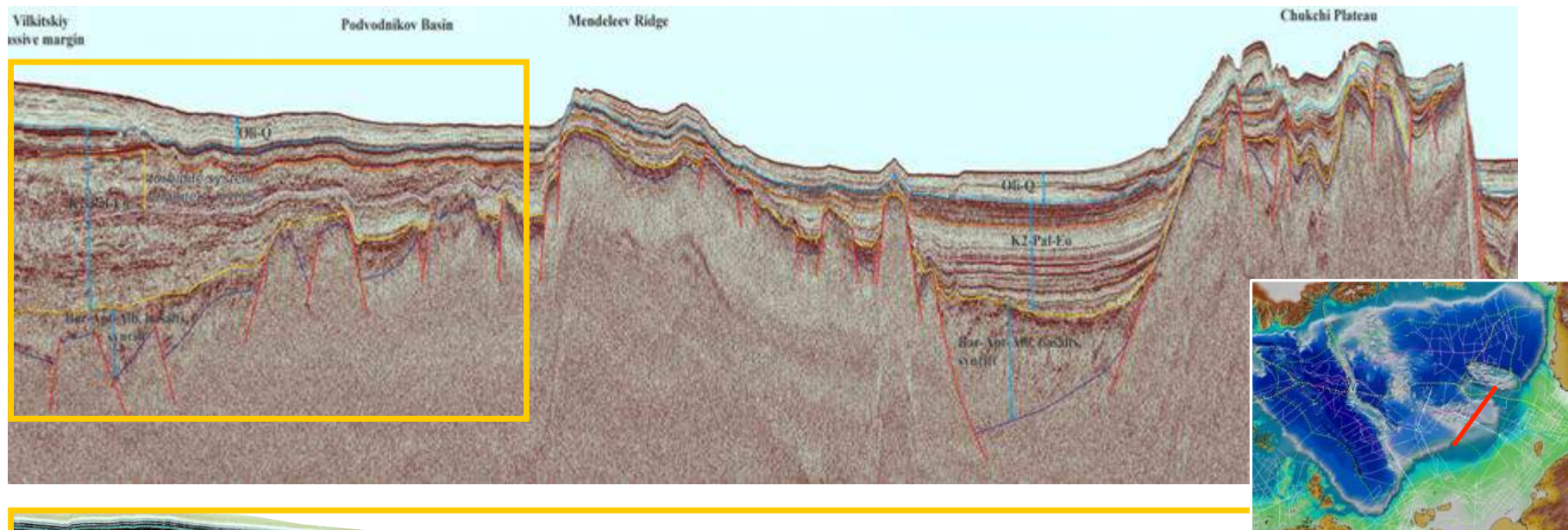
Lomonosov Ridge – Podvodnikov Basin - Mendeleev Ridge – Chukchi Plateau



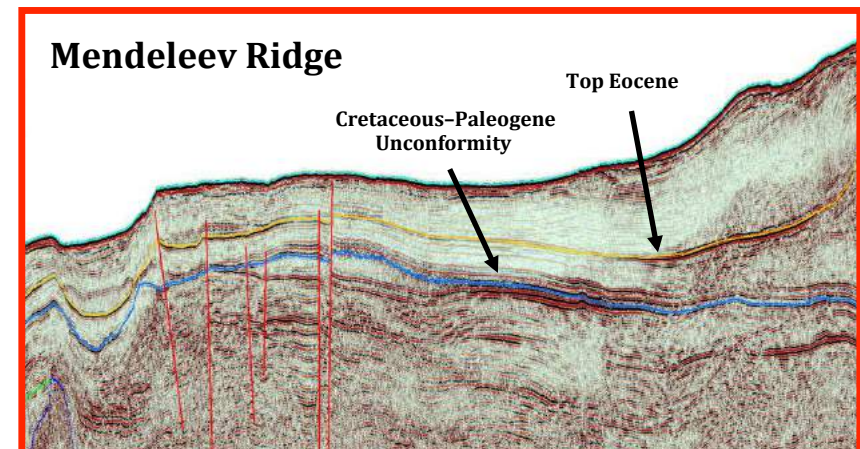
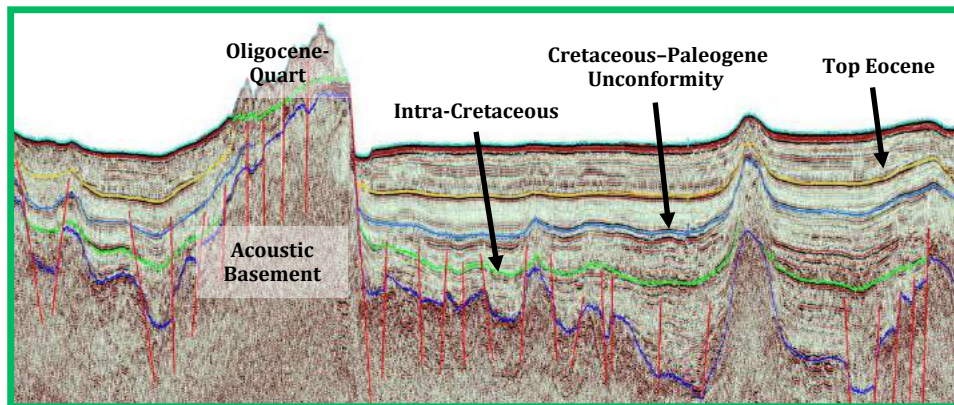
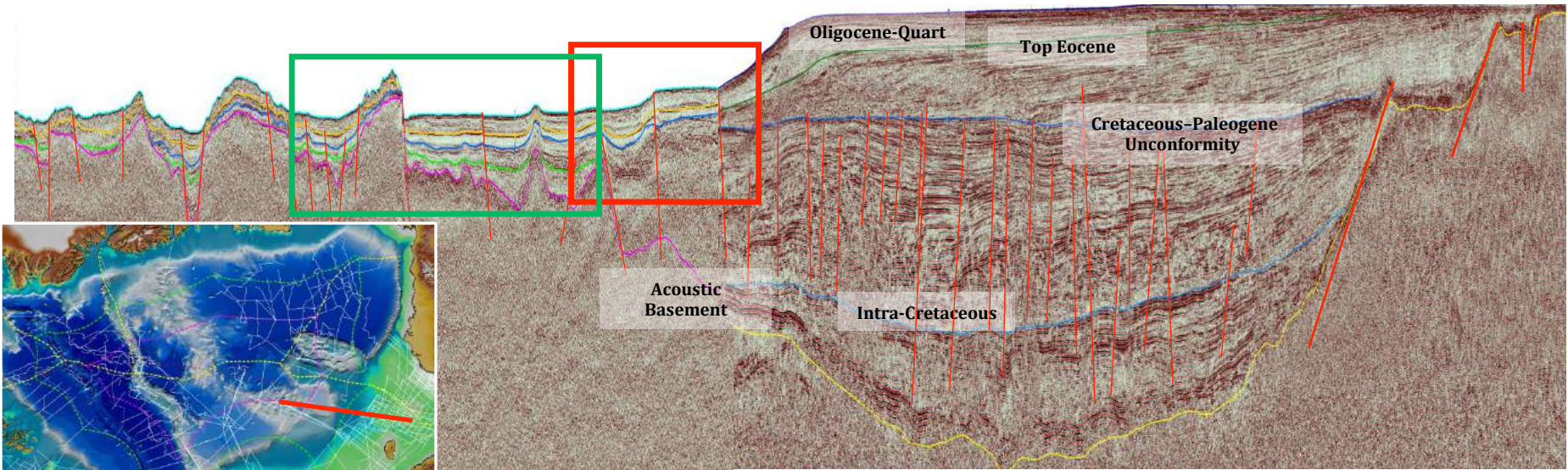
**Chukchi Plateau, bright reflectors;
possible Cretaceous basalts**

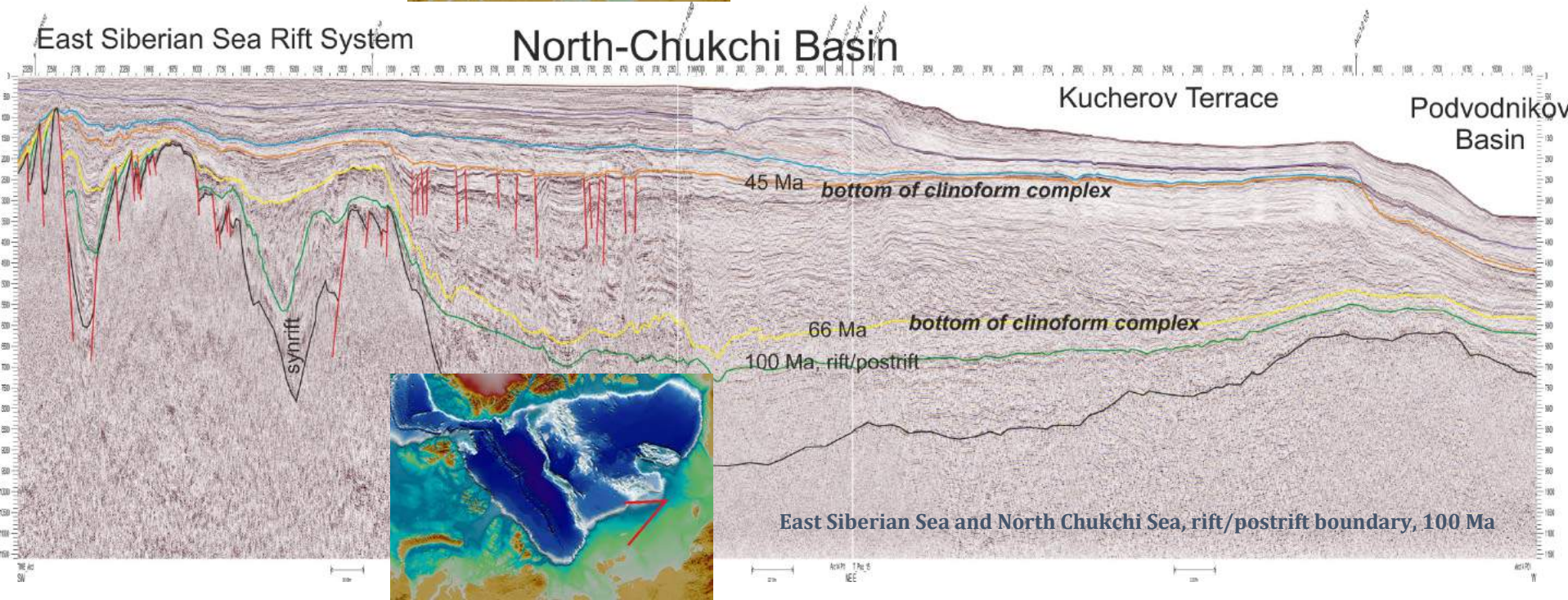
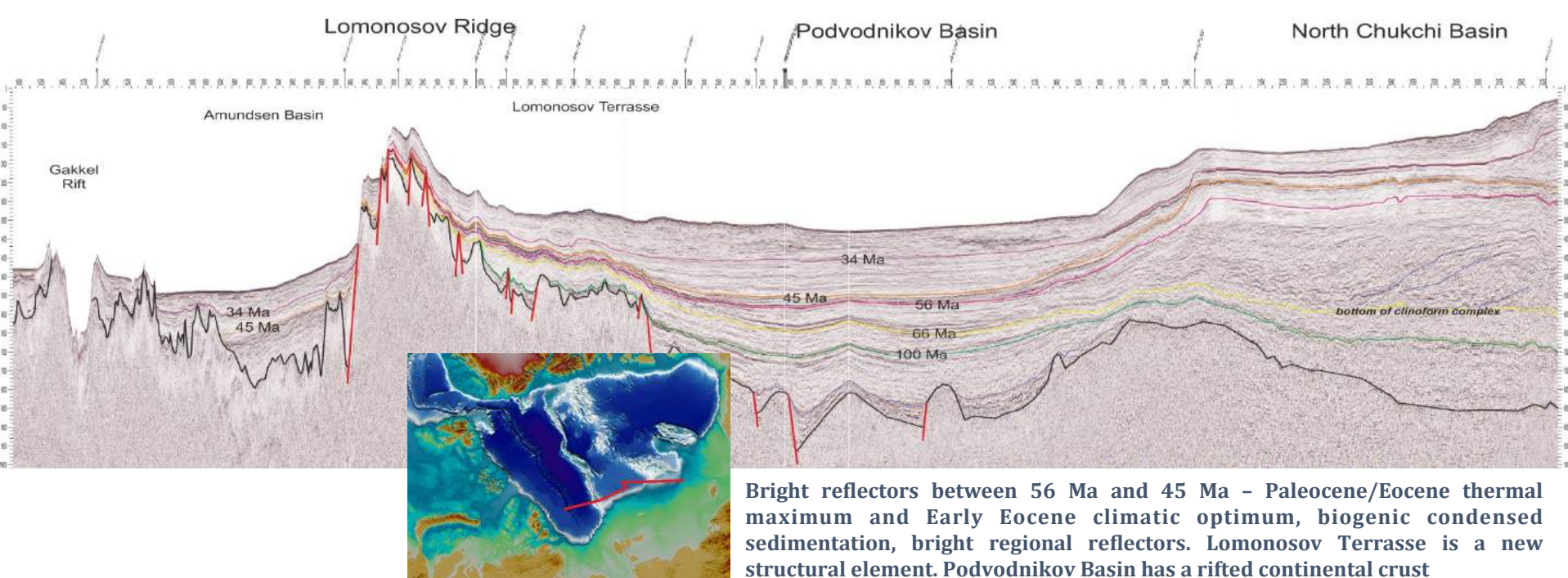


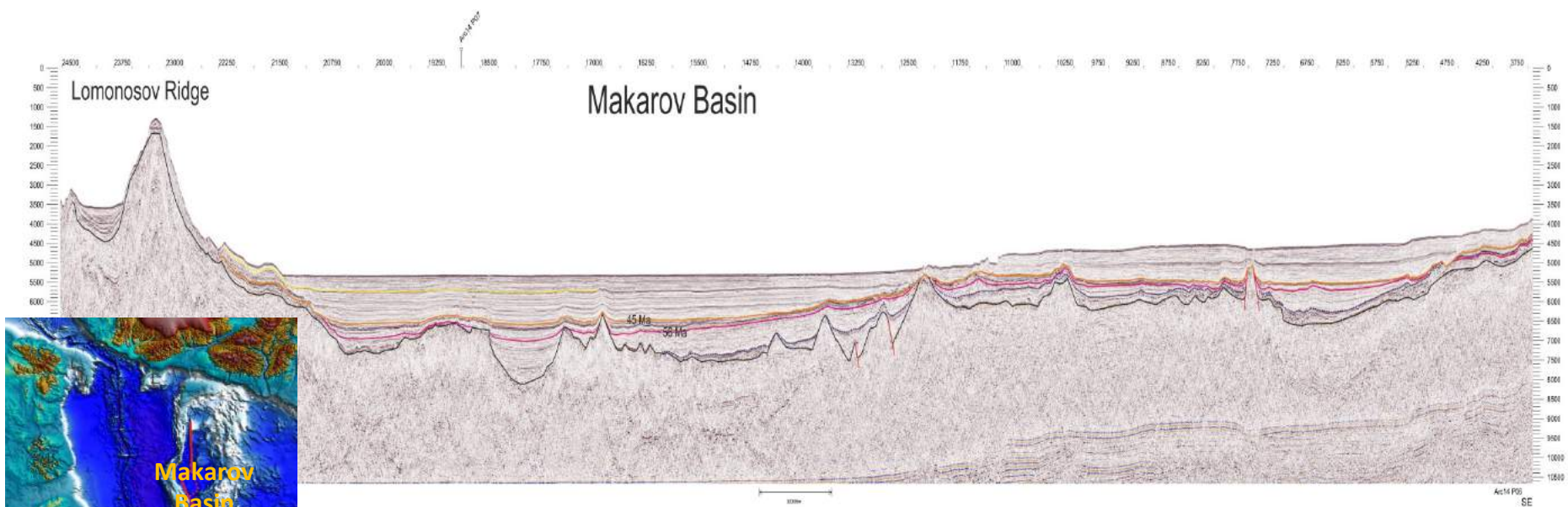
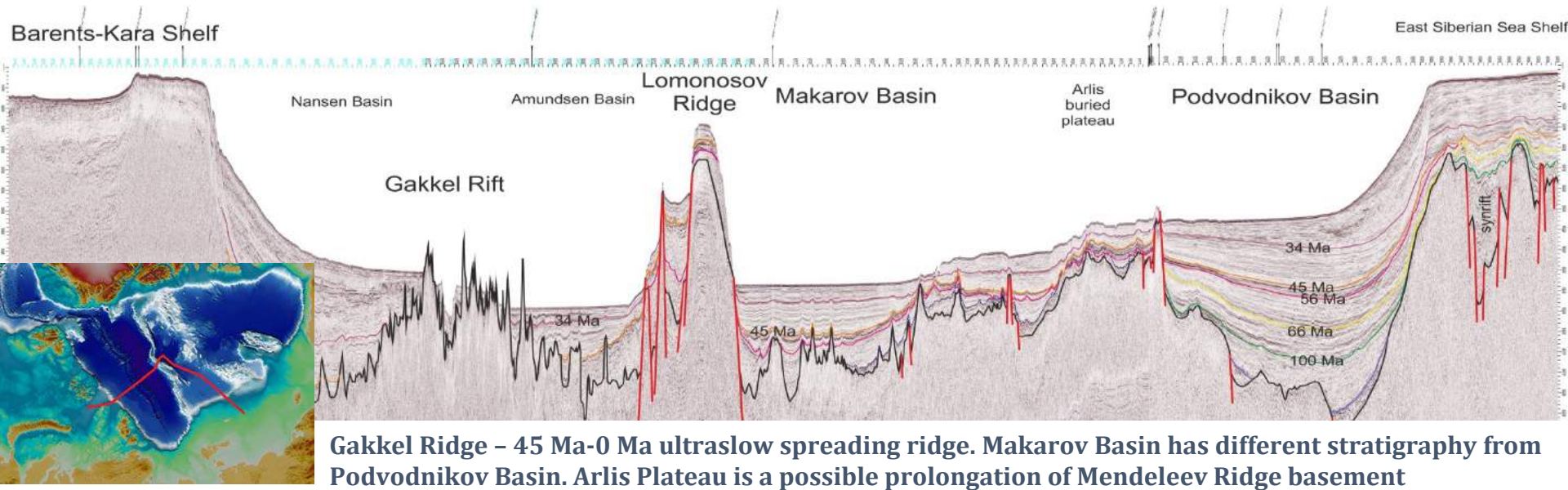
Podvodnikov Basin



SEISMIC STRATIGRAPHY IN MENDELEEV RIDGE - NORTH CHUKCHI BASIN





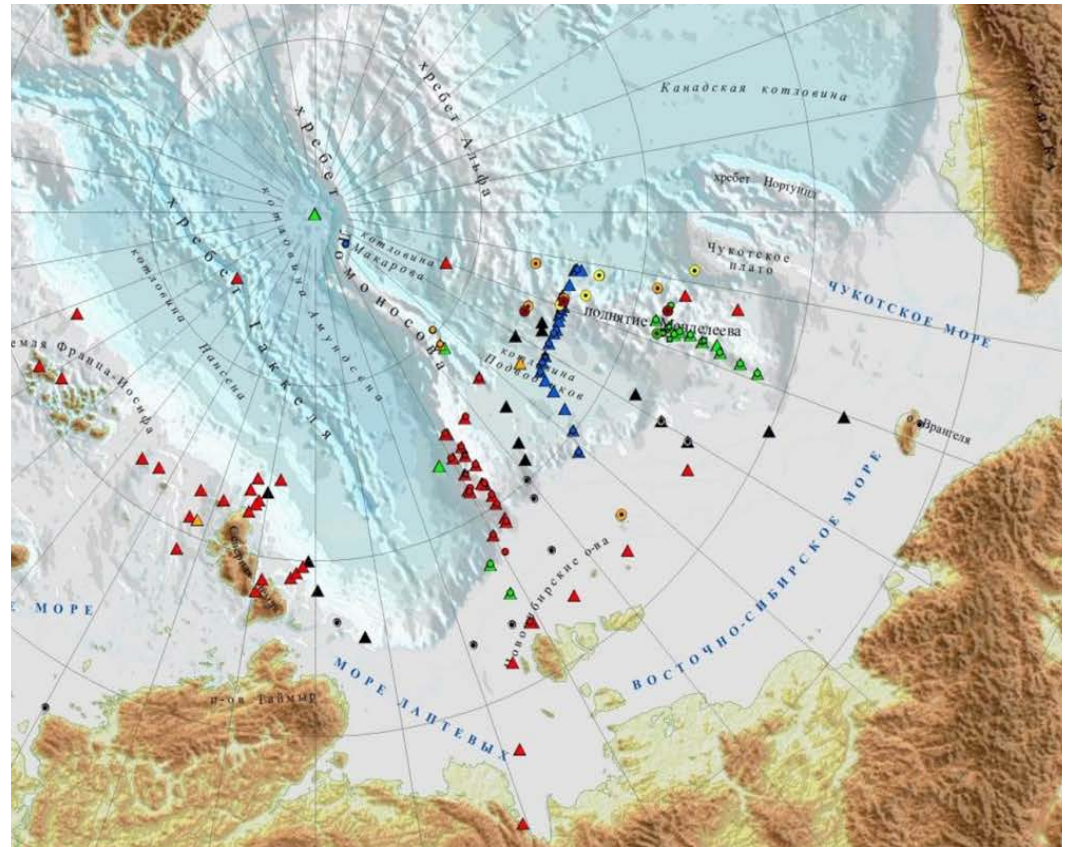


Makarov Basin: possible latest Cretaceous to Paleocene pull-apart basin with local oceanic crust

DEEPWATER DRILLING



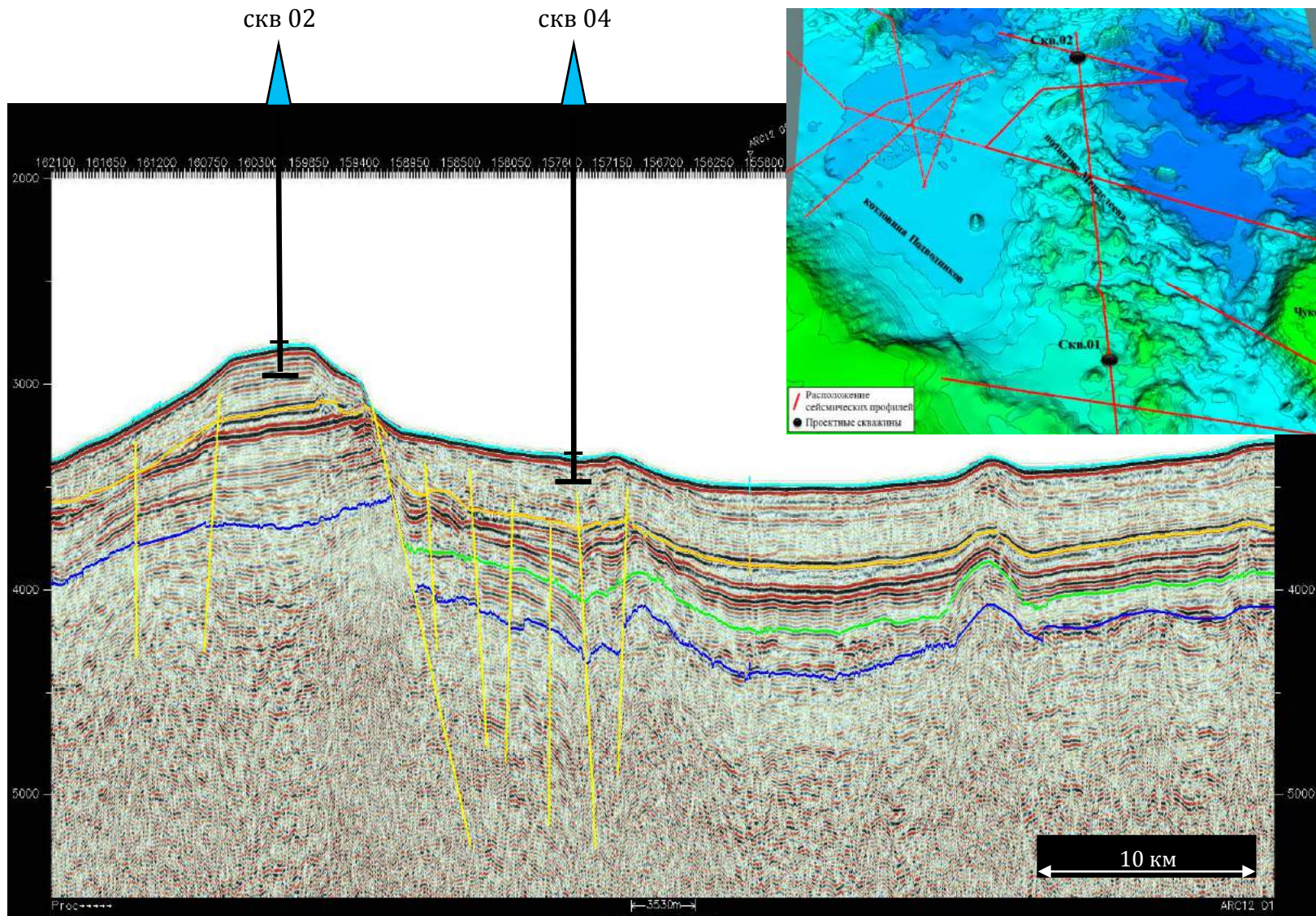
Drill rig GBU-2/4000L



Core samples from a depth of 2 to 3 km



DEEPWATER DRILLING



SEABED DREDGING



SAMPLING WITH TV-GRAB



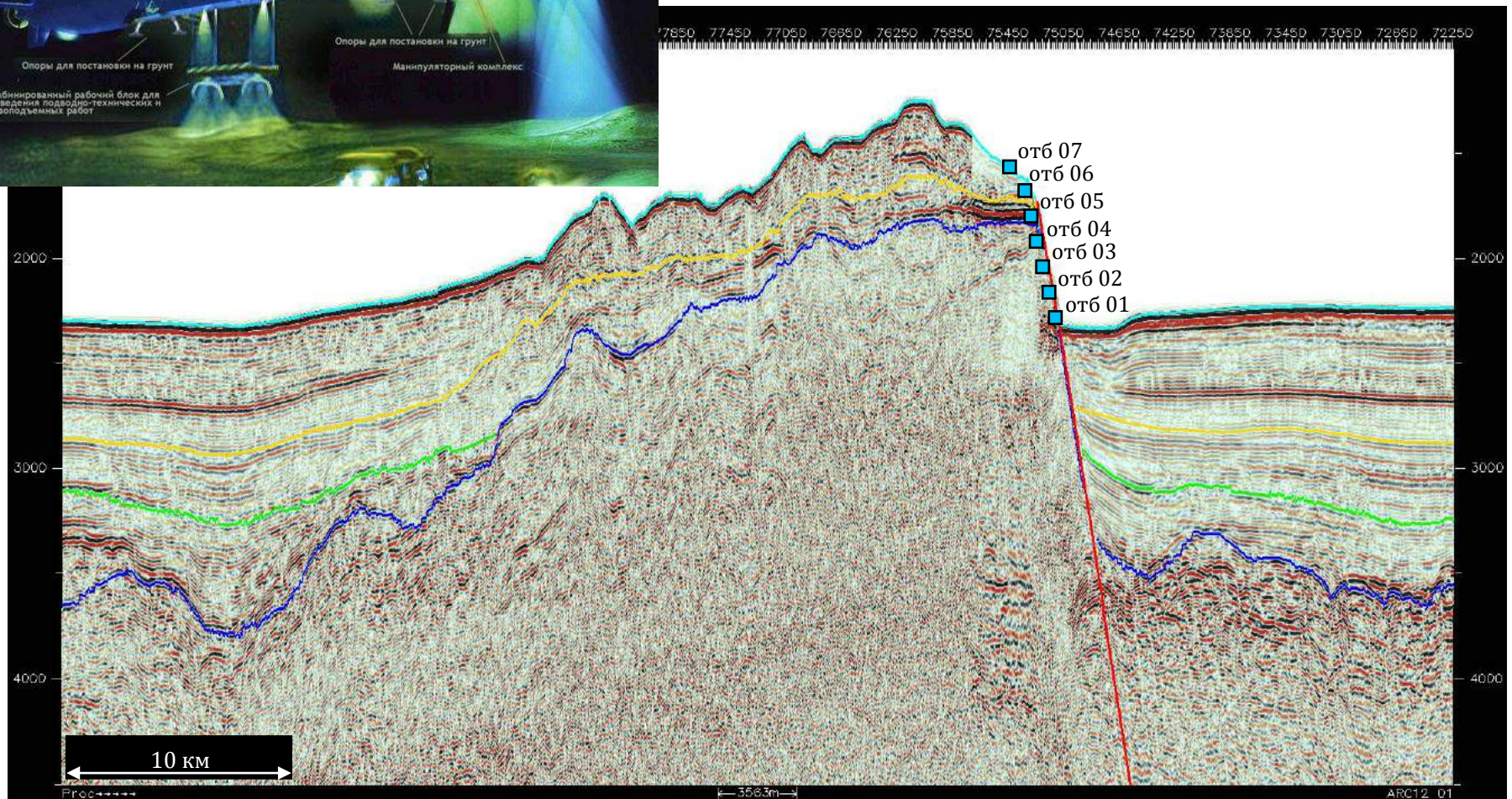
SAMPLING WITH HYDROSTATIC PISTON CORE FOR PALEOMAGNETIC INVESTIGATIONS



6 (7)
Sampling stations with
hydrostatic sampler GSP



SAMPLING WITH MANNED RESEARCH SUBMARINE MANIPULATORS



SAMPLING WITH MANNED RESEARCH SUBMARINE MANIPULATORS



SAMPLING WITH RESEARCH SUBMARINE





Thank you for your attention!