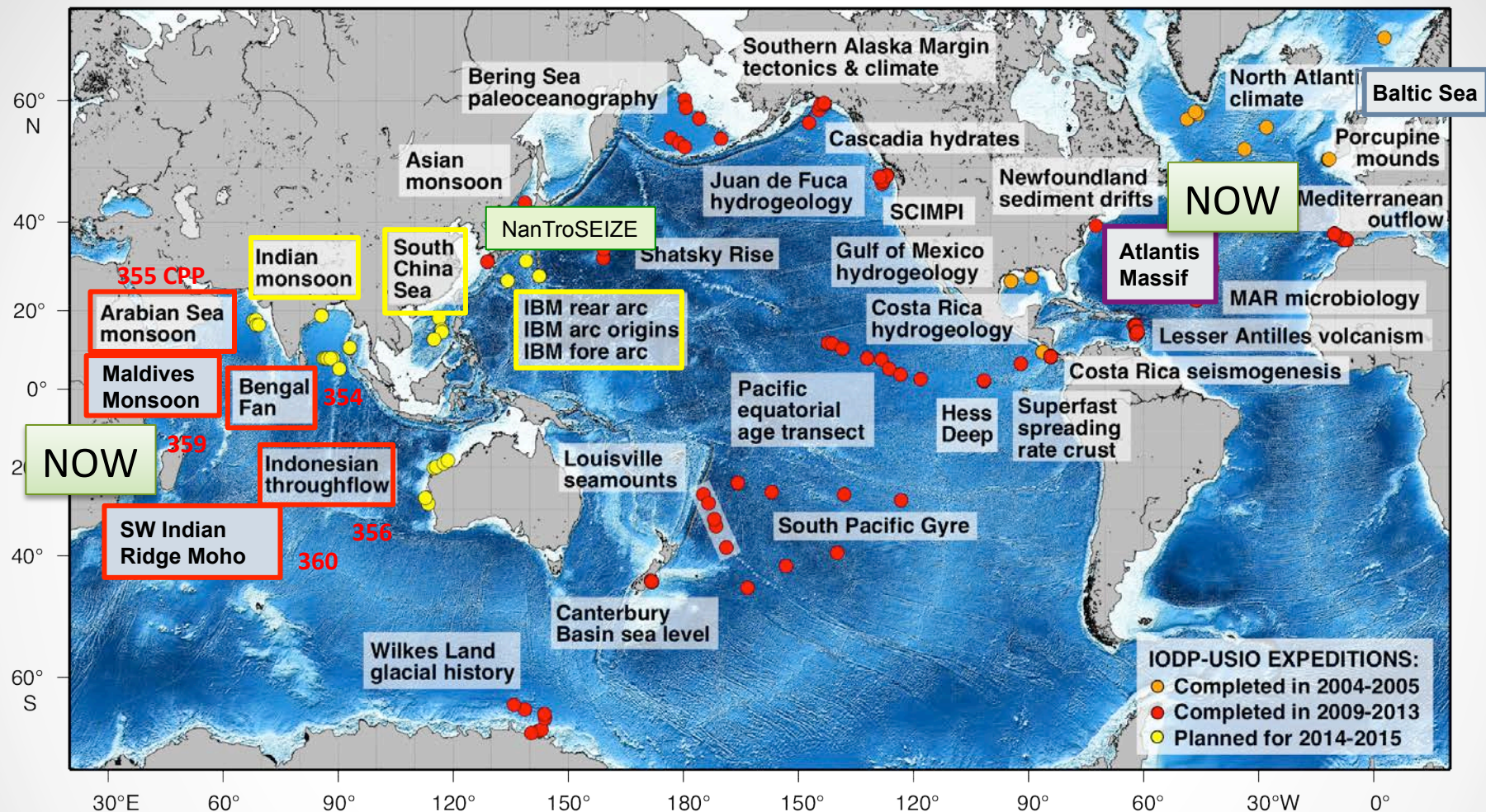




**Joint ECORD/ESSAC Meeting
28-29 October 2015
Castel dell'Ovo, Naples, Italy**

ESSAC Expedition & Staffing Update

Staffing Completed for all IODP Expeditions 2015



JR Expeditions 2014

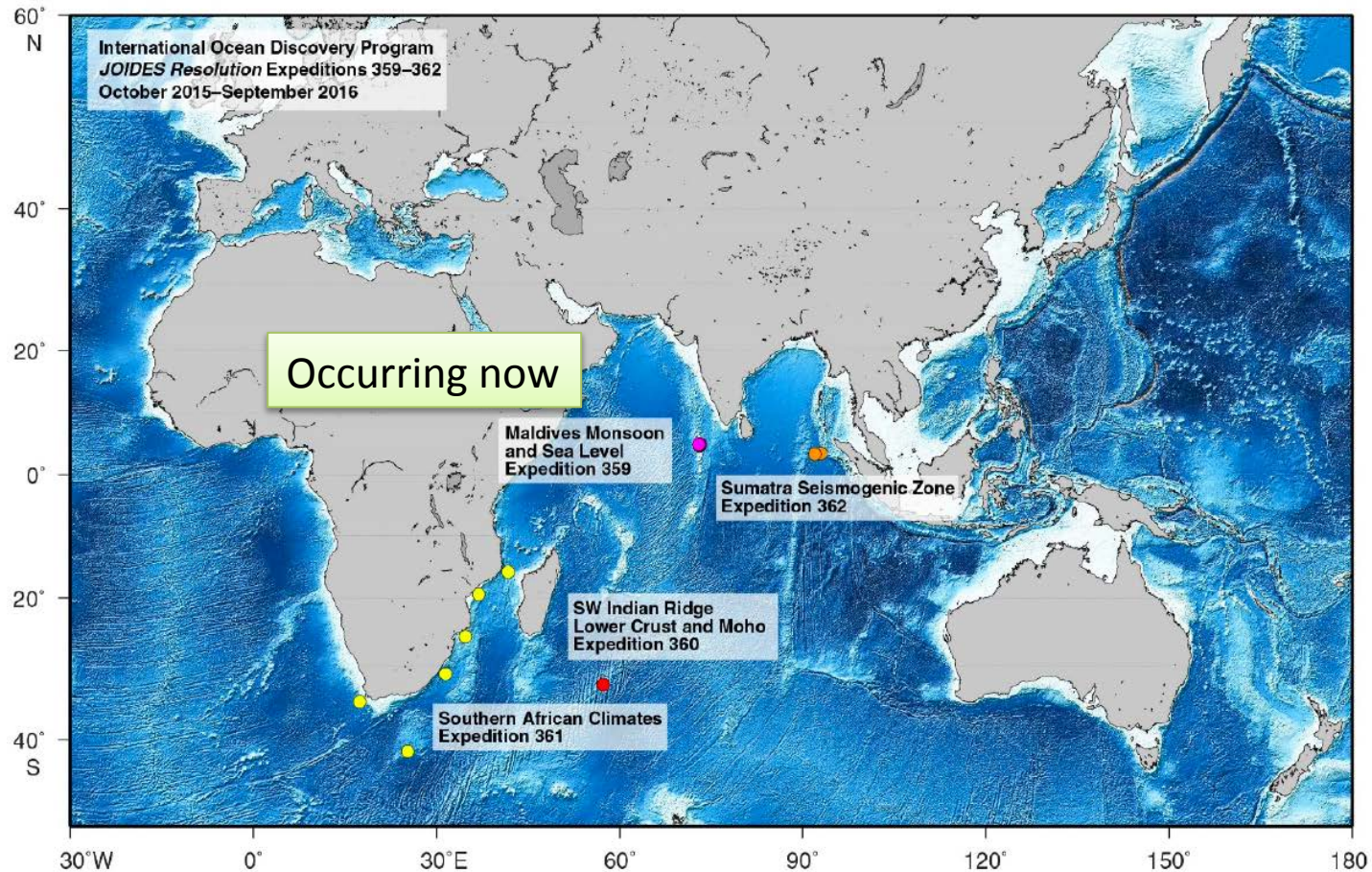
JR Expeditions 2015

Chikyū Expeditions 2013-2014

MSP Expeditions 2013

MSP Expeditions 2015

Current & upcoming *JR* Expeditions – Staffing Complete through Sept 2016 (Exp. 362)



ECORD Co-chiefs on each expedition

MSP & Chikyu Staffing

- **MSP Exp. 357: Atlantis Massif Serpentinization & Life** (26 Oct to 11 Dec 2015)

Co-chiefs: [Gretchen Früh-Green](#) (CH) & Beth Orcutt

Staffing: 3 Ger, 4 Fr, 1 CH, 1 Can, 1 Italy, 2 Nor

In-kind Contribution Berths 3 UK

Set sail on Monday
15 ECORD Scientists
+ 1 ECORD Co-Chief

An expedition of “firsts”:

- *1st MSP in the new programme*
- *1st time to use seabed rock drills*
- *1st time with > 50 % women in the science party*

- **MSP Exp. 364: Chicxulub Impact Crater** (April/May 2016 – TBD)

Co-chiefs: [Joanna Morgan](#) (UK) & Sean Gulick

Staffing: 3 UK, 4 Ger, 3 Fr, 1 Aus, 1 Belg, 1 Can, 1 NL

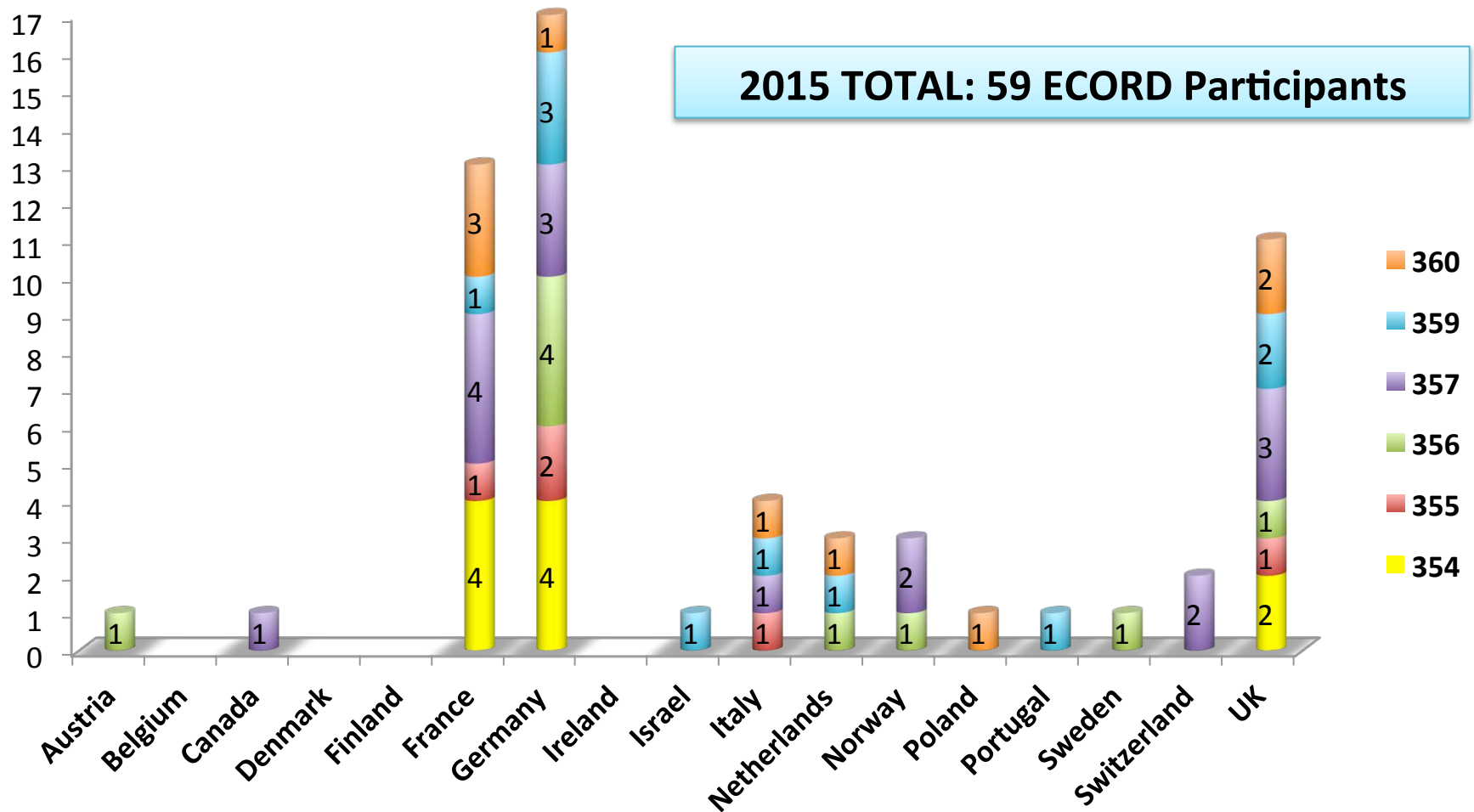
– 4 ECORD scientists in the offshore phase

14 ECORD Scientists
+ 1 ECORD Co-Chief

MSP & Chikyu Staffing

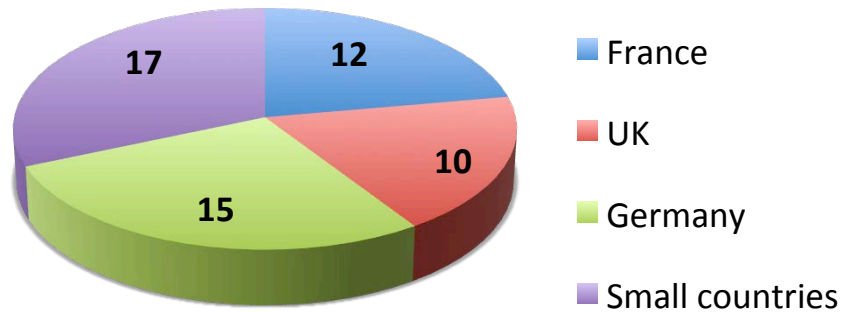
- **Chikyu Exp. 365:** NanTroSEIZE Shallow Megasplay LTBMS
(26 March - 27 April 2016)
ONLY 1 application: Canada
 - not forwarded because of over-quotas for Canada

2015 Expedition Participants Exps. 354 to 360 (Including 5 Co-chiefs, 3 Special Calls and 3 In-kind Contributions)

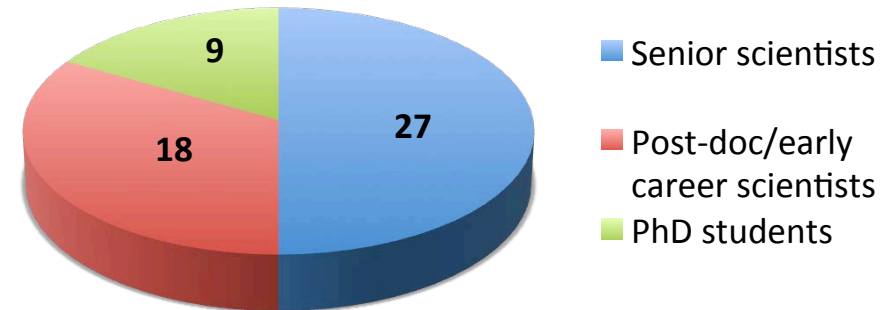


2015 Expedition Participants Exp. 354 to 360 (Including 3 Special Calls & 3 In-kind Contributions)

Participants by country 2015



Participants by career stage 2015



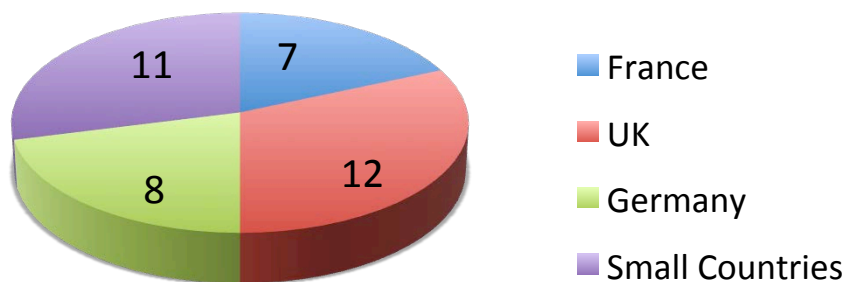
2015 TOTAL: 54 plus 5 Co-chiefs

Exp.		Total participants	Special Calls & ECORD Co-chiefs
354	Bengal Fan	10	2 Co-chiefs Fr and Ger, 1 Sp. Call Fr
355	Arabian Sea Monsoon (CPP)	5	
356	Indonesian Throughflow	9	
357	Atlantis Massif (MSP)	16	1 Co-chief CH, 3 IKC UK
359	Maldives Monsoon	10	1 Co-chief Ger, 2 Sp. Calls, It &UK
360	SW Indian Ridge	9	1 Co-chief UK

2014 Participants

Exp. 349 to 353

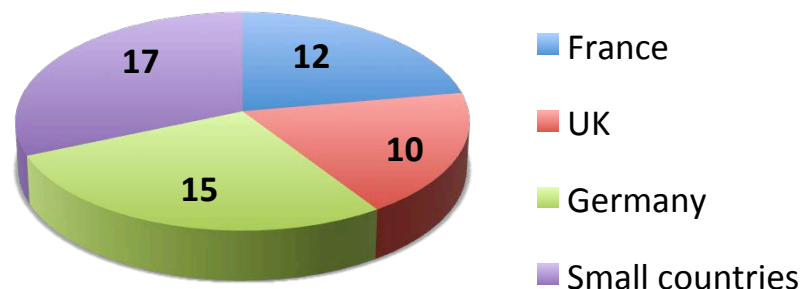
JR: 4 plus 1 CPP
26 Jan 2014 – 29 Jan 2015



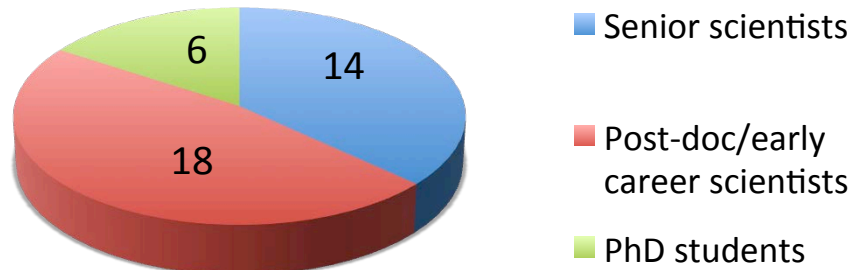
2015 Participants

Exp. 354 to 360

5 JR plus 1 MSP
29 Jan 2015 – 30 Jan 2016

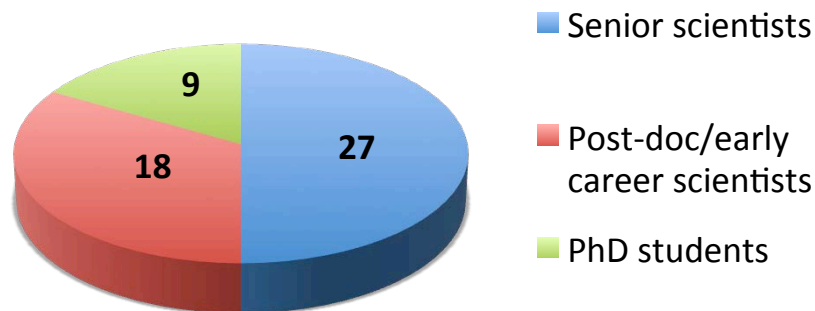


2014 TOTAL: 38 plus 2 Co-chiefs



Including 6 Special Calls

2015 TOTAL: 54 plus 5 Co-chiefs



(Including 3 Special Calls & 3 In-kind Contributions)

Staffing – Ranking & Nominations in Progress & New Calls

- **JR Exp. 363:** Western Pacific Warm Pool (30 Sept to 30 Nov 2016)
Co-chiefs: Yair Rosenthal & [Ann Holbourn](#)
24 applications: 10 UK, 8 Ger, 4 Fr, 2 NL, 1 Swe, 1 Nor, 2 Italy
– *Nominations were sent 15 October: 3 Fr, 2 UK, 2 Ger, 1 Norway*
- **JR Exp. 366:** Mariana Convergent Margin (30 Nov 16 to 30 Jan 17)
Co-chiefs: Patricia Fryer & Geoffrey Wheat
17 applications: 4 UK, 5 Ger, 4 Fr, 1 Aus, 1 CH, 1 Italy, 1 Por
– *Nominations to be sent 15 November*



New Calls for 2017



CALL FOR APPLICATIONS

for scientists based in ECORD Member Countries to participate in

**IODP SOUTH CHINA SEA RIFTED MARGIN
EXPEDITIONS 367 and 368**

on board the *JOIDES* Resolution

(February-March 2017 and April-May 2017)

DEADLINE to apply: 15 January 2016

ECORD Member Contributions & Quotas					Quotas 2014 & 2015 (Exps. 349 - 360)				
Member	Financial Contribution (%)	FY 2014 (\$US)	FY 2015 (\$US)	Total Contribution (US\$)	Total Berths invited	Total Berths special calls/IKC	berths entitled, excl. Sp. Calls & Cc	Difference	Total Sailed, incl. co-chiefs
France	25.96%	5'212'080	4'353'380	9'565'460	18	1	20.51	-2.51	20
Germany	30.39%	5'600'000	5'600'000	11'200'000	23	0	24.01	-1.01	26
UK	22.56%	4'296'400	4'016'470	8'312'870	16	6	17.82	-1.82	24
Sum	78.90%	15'108'480	13'791'387	29'078'330	57	7	62.33	-5.33	66
Austria	0.54%	100'000	100'000	200'000	1	1	0.43	0.57	2
Belgium	0.15%	30'000	28'100	58'100	0	0	0.12	-0.12	0
Canada	0.81%	75'000	75'000	150'000	1	0	0.32	0.68	1
Denmark	0.89%	184'000	143'227	327'227	0	0	0.70	-0.72	0
Finland	0.43%	80'000	80'000	160'000	0	0	0.34	-0.34	0
Iceland*	0.08%	30'000		30'000	0	0	0.06	-0.06	0
Ireland	0.78%	137'000	149'365	286'365	0	0	0.61	-0.61	0
Israel	0.16%	30'000	30'000	60'000	1	0	0.13	0.87	1
Italy	2.17%	400'000	400'000	800'000	3	2	1.71	1.29	5
Netherlands	2.72%	500'000	500'000	1'000'000	4	0	2.14	1.86	4
Norway	5.98%	1'100'000	1'100'000	2'200'000	4	0	4.72	-0.72	4
Poland	0.16%	30'000	30'000	60'000	1	0	0.13	0.87	1
Portugal	0.49%	90'000	90'000	180'000	1	1	0.39	0.61	2
Sweden	2.87%	528'000	528'000	1'056'000	3	1	2.26	0.74	4
Switzerland	3.26%	600'000	600'000	1'200'000	3	1	2.57	0.43	5
Sum	21.50%	3'914'000	3'860'660	7'774'660	22	6	16.67	5.33	28
TOTAL ECORD		19'022'480	17'830'510	36'852'990	79	13	79.00	0.00	94

Projected participation & quotas into 2016

							Staffed Expeditions in 2016											
		Quotas 2014 & 2015 (Exps. 349 - 360)					Exp 361 S. African Climates		Exp 362 Sumatra Seismogenic Zone		MSP Exp 364 Chicxulub Impact Crater		Co- chiefs FY 16	Projected Quotas 2014 - 2016 (Exps. 349 - 362 & 364)				
Member	Financial Contrib. (%)	Total Berths invited	Total Berths special calls/ IKC	berths entitled * - excl. Sp. Calls & Cc	Diff.	Total Sailed, incl. co- chiefs	Invited	Sp. Call	Invited	Sp. Call	Invited	Sp. Call		Total Berths invited	Total Berths special calls/ IKC	berths entitled - excl. Sp. Calls & Cc	Diff.	Total Sailed, incl. co- chiefs
France	25.96%	18	1	20.51	-2.51	20	2		2		3			25	1	28.29	-3.29	27
Germany	30.39%	23	0	24.01	-1.01	26	3	1	2		4			32	1	33.13	-1.13	36
UK	22.56%	16	6	17.82	-1.82	24	2		2	1	3		3	23	7	24.59	-1.59	35
Sum	78.90%	57	7	62.33	-5.33	66	7	1	6	1	10	0	3	80	9	86.00	-6.00	98
Austria	0.54%	1	1	0.43	0.57	2					1			2	1	0.59	1.41	3
Belgium	0.16%	0	0	0.12	-0.12	0					1			1	0	0.17	0.83	1
Canada	0.16%	1	0	0.00	-0.00	1					1			1	0	0.00	-0.00	2
Denmark																		1
Finland																		0
Iceland*																		0
Ireland																		0
Israel	0.16%	1	0	0.13	0.87	1								1	0	0.18	0.82	1
Italy	2.17%	3	2	1.71	1.29	5								3	2	2.37	0.63	5
Netherlands	2.71%	4	0	2.14	1.86	4	1				1			6	0	2.96	3.04	6
Norway	5.97%	4	0	4.72	-0.72	4								4	0	6.51	-2.51	4
Poland	0.16%	1	0	0.13	0.87	1								1	0	0.18	0.82	1
Portugal	0.49%	1	1	0.39	0.61	2								1	1	0.53	0.47	2
Sweden	2.87%	3	1	2.26	0.74	4			1					4	1	3.12	0.88	5
Switzerland	3.26%	3	1	2.57	0.43	5								3	1	3.55	-0.55	5
Sum	21.10%	22	6	16.67	5.33	28	1	0	2	0	4	0	0	29	6	23.00	6.00	36
TOTAL ECORD		79	13	79.00	0.00	94	8	1	8	1	14	0	3	109	15	109.00	0.00	126

Nominations for Exp 363 W Pacific Warm Pool:
3 France, 2 Germany, 2 UK , 1 Norway

Projected participation & quotas into 2016

							Expeditions in 2016																
		Projected Quotas 2014 & 2015 (Exps. 349 - 360)					Exp 361 S. African Climates		Exp 362 Sumatra Seismo- genic Zone		Exp 363 W Pacific Warm Pool		MSP Exp 364 Chicxulub Impact Crater		Exp 366 Mariana Conver- gent Margin		Co- chiefs FY 16		Projected Quotas 2014 - 2016 (Exps. 349 - 362 & 364)				
Member	Financial Contrib. (%)	Total Berths invited	Total Berths special calls/ IKC	berths entitle d - excl. Sp. Calls & Cc	Diff.	Total Sailed, incl. co- chiefs	Inv.	Sp Call	Inv.	Sp Call	Nom.	Sp Call	Inv.	Sp Call			Total Berths invited	Total Berths special calls/ IKC	berths entitle d - excl. Sp. Calls & Cc	Diff.	Total Sailed, incl. co- chiefs		
France	25.96%	18	1	20.51	-2.51	20	2		2		3		3				28	1	30.37	-2.37	30		
Germany	30.39%	23	0	24.01	-1.01	26	3	1	2		2		4				34	1	35.56	-1.56	38		
UK	22.56%	16	6	17.82	-1.82	24	2		2	1	2		3			3	25	7	26.39	-1.39	37		
Sum	78.90%	57	7	62.33	-5.33	66	7	1	6	1	7	0	10	0	0	0	87	9	92.32	-5.32	105		
Austria	0.54%	1	1	0.43	0.57	2							1				2	1	0.63	1.37	3		
Belgium	0.16%	0	0	0.12	-0.12	0							1				1	0	0.18	0.82	1		
Canada	0.41%	1	0	0.32	0.68	1							1				2	0	0.48	1.52	2		
Denmark	0.91%	0	0	0.72	-0.72	0			1								1	0	1.06	-0.06	1		
Finland	0.43%	0	0	0.34	-0.34	0											0	0	0.51	-0.51	0		
Iceland*	0.08%	0	0	0.06	-0.06	0											0	0	0.10	-0.10	0		
Ireland	0.78%	0	0	0.61	-0.61	0											0	0	0.91	-0.91	0		
Israel	0.16%	1	0	0.13	0.87	1											1	0	0.19	0.81	1		
Italy	2.17%	3	2	1.71	1.29	5											3	2	2.54	0.46	5		
Netherlands	2.71%	4	0	2.14	1.86	4	1						1				6	0	3.17	2.83	6		
Norway	5.97%	4	0	4.72	-0.72	4					1						5	0	6.98	-1.98	5		
Poland	0.16%	1	0	0.13	0.87	1											1	0	0.19	0.81	1		
Portugal	0.49%	1	1	0.39	0.61	2											1	1	0.57	0.43	2		
Sweden	2.87%	3	1	2.26	0.74	4			1								4	1	3.35	0.65	5		
Switzerland	3.26%	3	1	2.57	0.43	5											3	1	3.81	-0.81	5		
Sum	21.10%	22	6	16.67	5.33	28	1	0	2	0	1	0	4	0	0	0	30	6	24.68	5.32	37		
TOTAL ECORD		79	13	79.00	0.00	94	8	1	8	1	8	0	14	0	0	0	3	117	15	117.00	0.00	134	

JR Advisory Panel Members 2015

SEP (Science Evaluation Panel)				
Science Evaluation Subgroup:			Term	Expertise
Kroon	Dick	UK	Chair – rotated off	Paleoceanography
Geldmacher	Jörg	Germany	Sept 12 - Dec 15	Igneous geochemistry, petrology, geodynamics
Heuer	Verena	Germany	Dec 12 - Dec 15	Biogeochemistry, organic geochemistry and deep biosphere
McNeill	Lisa	UK	Aug 12 - Dec 15	Tectonics, structure and geohazards
O'Regan	Matt	Sweden	May 13-Dec 15	Marine geology, paleoceanography
Godard	Marguerite	France	Jan 15-Dec 17	Petrology and geochemistry
Bohaty	Steven	UK	Jan 15-Dec 17	Paleoceanograph, sedimentary geochemistry
Piller	Werner	Austria	Jan 15-Dec 17	Carbonate sedimentology and Micropaleontology
Gutscher	Marc-André	France	Jan 15-Dec 17	Marine geophysics (bathymetry, seismics)
SEP (Science Evaluation Panel)				
Site Evaluation Subgroup:			Term	Expertise
Huuse	Mads	UK	Sept 12 - Dec 15	Shallow fluid flow, hydrocarbons in shallow sediments, slope stability, erosion, sedimentation
Mosher	David C.	Canada	Sept 12 - Dec 15	Structural geology
Unzelmann-Neben	Gabi	Germany	>3 years as member	Reflection seismology, sedimentology, seismostratigraphy, sediment transport
Krastel	Sebastian	Germany	June 13 - Jan 16	Submarine hazards, slope stability and submarine mass wasting
Berné	Serge	France	Jun 14- Jan 17	Seismic stratigraphy and sedimentology

JR Advisory Panel – Proposed Members 2016

SEP (Science Evaluation Panel)				
Science Evaluation Subgroup:			Term	Expertise
Godard	Marguerite	France	Jan 15 – Dec 17	Petrology and geochemistry
Gutscher	Marc-André	France	Jan 15 – Dec 17	Marine geophysics (bathymetry, seismics)
Bohaty	Steven	UK	Jan 15 – Dec 17	Paleoceanograph, sedimentary geochemistry
Piller	Werner	Austria	Jan 15 – Dec 17	Carbonate sedimentology and Micropaleontology
Kallmeyer	Jens	Germany	Jan 16 – Dec 18	Geomicrobiology and deep biosphere
Villinger	Heinrich	Germany	Jan 16 – Dec 18	Marine geophysics. Downhole tools and physical properties. Heat flow and hydrogeology
McCaig	Andrew	UK	Jan 16 – Dec 18	Oceanic crustal processes, tectonics of detachment faulting and hydrothermal processes
Jaccard	Samuel	Switzerland	Jan 16 – Dec 18	Climate and paleoceanography, nutrient dynamics and carbon cycles in polar environments
SEP (Science Evaluation Panel)				
Site Evaluation Subgroup:			Term	Expertise
Berné	Serge	France	Jun 14 – Jan 17	Seismic stratigraphy and sedimentology
Huuse	Mads	UK	Sept 12– Jan 16	Shallow fluid flow, hydrocarbons in shallow sediments, slope stability, erosion, sedimentation
Krastel	Sebastian	Germany	June 13 – Jan 16	Submarine hazards, slope stability and submarine mass wasting
Riedel	Michael	Germany	Jan 16 – Dec 18	Seismic and borehole measurements, gas hydrates and geohazard characterization
Campbell	Calvin	Canada	Jun 16 – May 19	Deep water sedimentary processes, marine geological hazards, bathymetry and seismic reflection
Ünzelmann-Neben	Gabriele	Germany	<i>Will rotate off after Jan SEP meeting</i>	Reflection seismology, sedimentology, seismostratigraphy, sediment transport

The INTERNATIONAL OCEAN DISCOVERY PROGRAM

CALL for APPLICATIONS

to serve on the **JOIDES Resolution Facility Board of IODP**

from Oct.2015- Oct. 2018

EXTENDED DEADLINE: 22 July 2015

Benoit Ildefonse	France	Géosciences Montpellier
Mark Lever	Switzerland	Institute of Biogeochemistry and Pollutant Dynamics Department of Environmental Sciences, ETH Zurich
Oscar Romero	Germany	MARUM
Paul Wilson	UK	Ocean & Earth Science National Oceanography Centre, University of Southampton

European Geosciences Union General Assembly 2015

Vienna | Austria | 12 – 17 April 2015

EGU.eu



Wednesday, 16 April 2015, 13:30 – 17:30

[\[Back to Programme Group\]](#)

SSP3.3.1/BG6.5/CL5.13/GMPV7.3

Achievements and perspectives in scientific ocean and continental drilling (co-organized)

Convener: Gretchen Fröh-Green

Co-Conveners: Anneleen Foubert , Thomas Wiersberg , Martin Ziegler

[Abstract Submission](#) [Convener Login](#)

Scientific drilling through the International Ocean Discovery Program (IODP) and the International Continental Scientific Drilling Program (ICDP) continues to provide unique opportunities to investigate the workings of the interior of our planet, Earth's cycles, natural hazards and the distribution of subsurface microbial life. The past and current scientific drilling programs have brought major advances in many multidisciplinary fields of socio-economic relevance, such as climate and ecosystem evolution, palaeoceanography, the deep biosphere, deep crustal and tectonic processes, geodynamics and geohazards. This session invites contributions that present and/or review recent scientific results from deep earth sampling and monitoring through ocean and continental drilling projects. Furthermore, we encourage contributions that outline perspectives and visions for future drilling projects, in particular projects using a multi-platform approach.

41 ABSTRACTS

27 Oral

14 Posters



European Geosciences Union General Assembly 2015

Vienna | Austria | 12 – 17 April 2015


EGU.eu





2016 – Convened by Jan Behrmann as ESSAC Chair

SSP3.3.1/BG6.5/CL5.13/GMPV7.3

Achievements and perspectives in scientific ocean and continental drilling (co-organized)

Convener: Gretchen Fröh-Green 

Co-Conveners: Anneleen Foubert , Thomas Wiersberg , Martin Ziegler 

[Abstract Submission](#) [Convener Login](#)

Scientific drilling through the International Ocean Discovery Program (IODP) and the International Continental Scientific Drilling Program (ICDP) continues to provide unique opportunities to investigate the workings of the interior of our planet, Earth's cycles, natural hazards and the distribution of subsurface microbial life. The past and current scientific drilling programs have brought major advances in many multidisciplinary fields of socio-economic relevance, such as climate and ecosystem evolution, palaeoceanography, the deep biosphere, deep crustal and tectonic processes, geodynamics and geohazards. This session invites contributions that present and/or review recent scientific results from deep earth sampling and monitoring through ocean and continental drilling projects. Furthermore, we encourage contributions that outline perspectives and visions for future drilling projects, in particular projects using a multi-platform approach.

ECORD

Publication Data Management System

- Teresa Bingham was hired (6 months) through ETH (ECORD funds) in mid-February to set up a publication data base
- Meeting in Zurich in February between Teresa, Patricia and Julia to establish method and priorities
- Testing and evaluation completed
- The data management system Zotero has been implemented & training for ESO staff needs to be completed.

zotero