

637-Full2 New England Shelf Hydrogeology

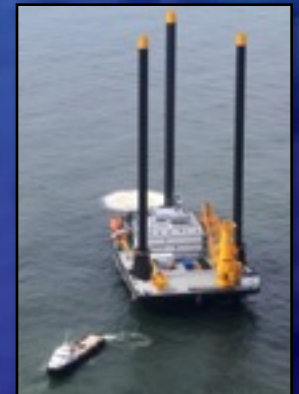
Water depths: 33-79 m

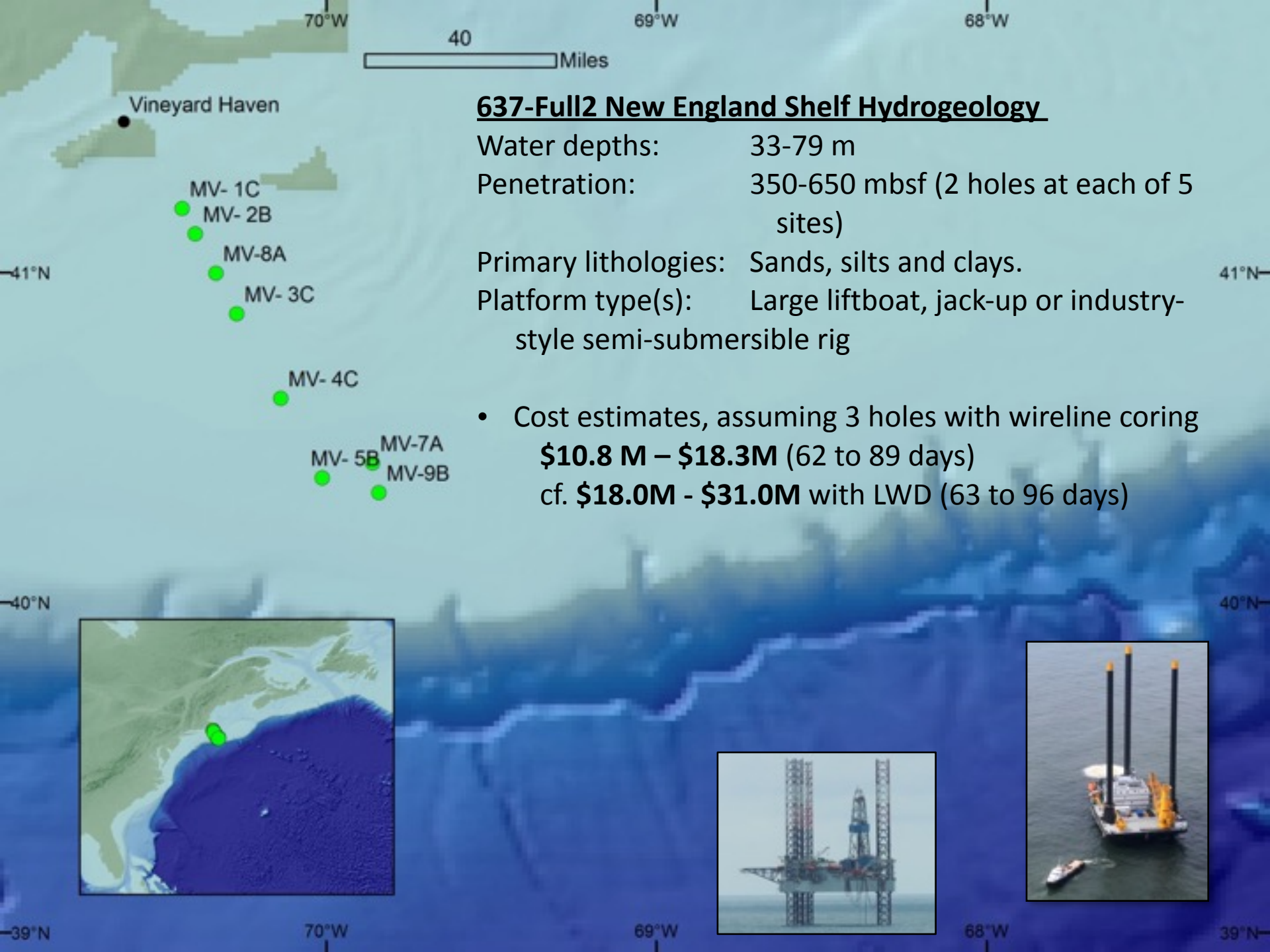
Penetration: 350-650 mbsf (2 holes at each of 5 sites)

Primary lithologies: Sands, silts and clays.

Platform type(s): Large liftboat, jack-up or industry-style semi-submersible rig

- Current proposal is feasible, but costly: LWD, casing, screening, packing and pumping (larger rig).
- Proponents encouraged by E-FB to consider wireline logging and reduce number of holes.
- **June 2016:** proponents potentially accept wireline logging in lieu of LWD, and will consider reducing sites from 5 to 3. A revised proposal needs to be submitted.





637-Full2 New England Shelf Hydrogeology

Water depths: 33-79 m
Penetration: 350-650 mbsf (2 holes at each of 5 sites)
Primary lithologies: Sands, silts and clays.
Platform type(s): Large liftboat, jack-up or industry-style semi-submersible rig

- Cost estimates, assuming 3 holes with wireline coring
\$10.8 M – \$18.3M (62 to 89 days)
cf. **\$18.0M - \$31.0M** with LWD (63 to 96 days)

