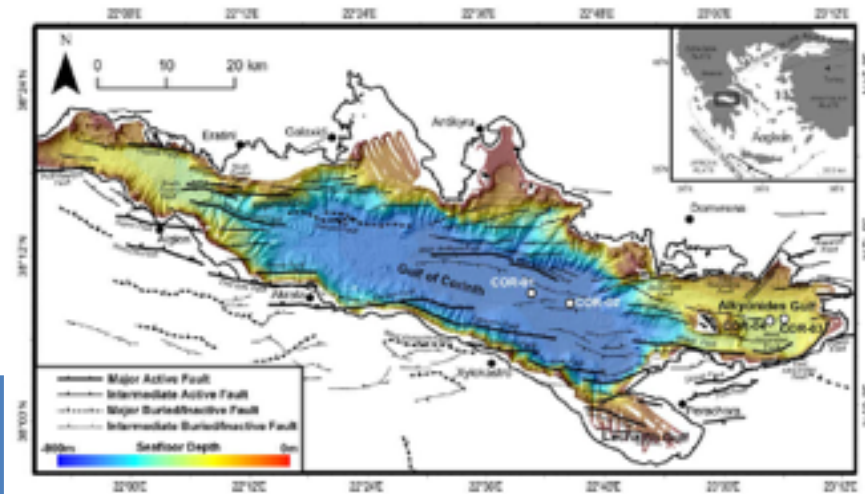


879-Full: Active Rift Development

- L. McNeill, I. Bailey, R. Bell, J. Bull, et al.

Site	Water depth	Target depth	Classification
COR-01	852	750	1
COR-02	862	750	1
COR-03	347	740	2
COR-04 (alt to 03)	365	480	2
COR-05A (alt to 02)	529	750	2
COR-06A (alt to 01)	861	750	2



Major goal:

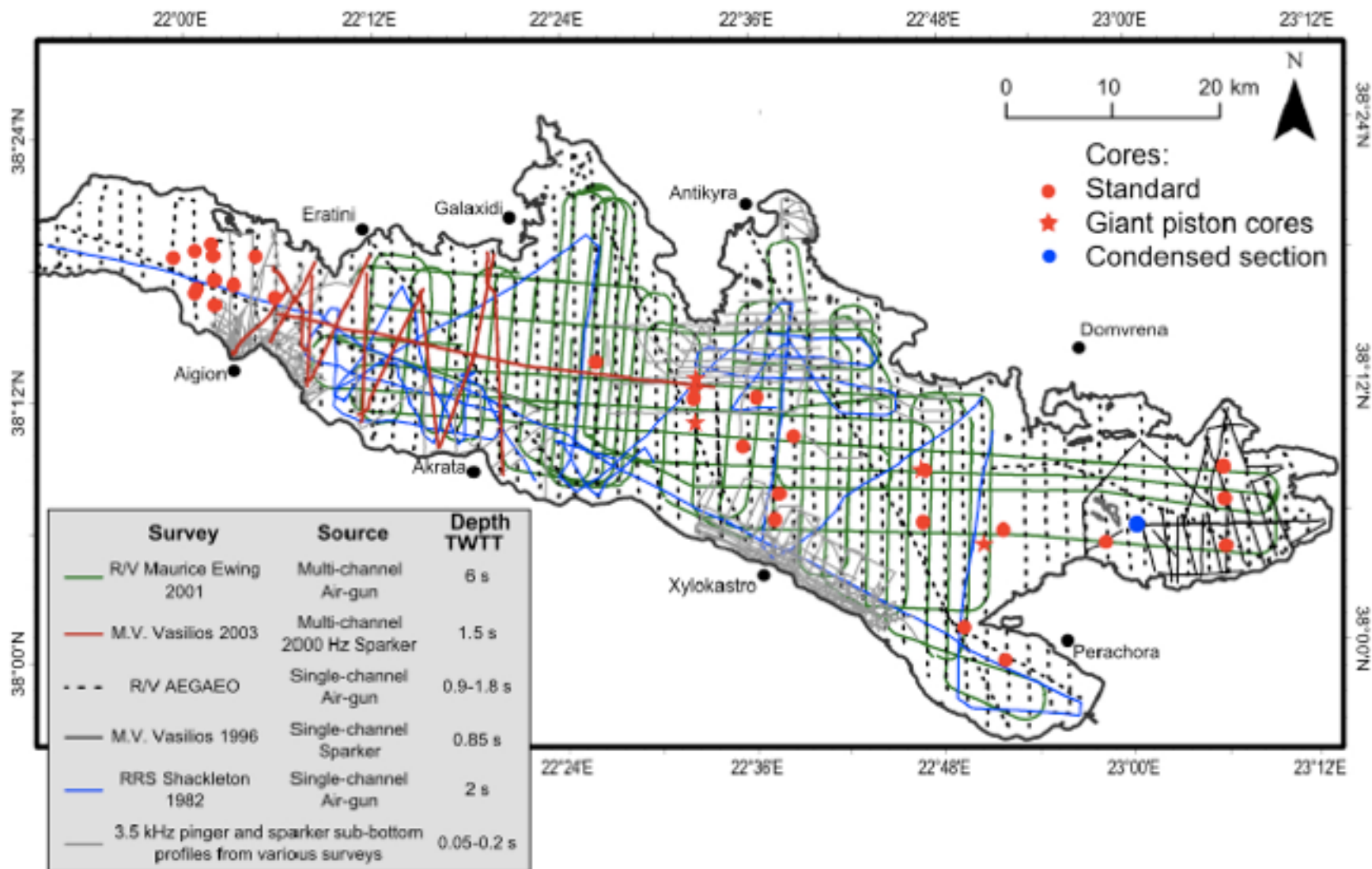
to resolve the syn-rift chronology and paleoenvironment and integrate this with an existing seismic database and onshore stratigraphy to address numerous objectives.

Proposal history

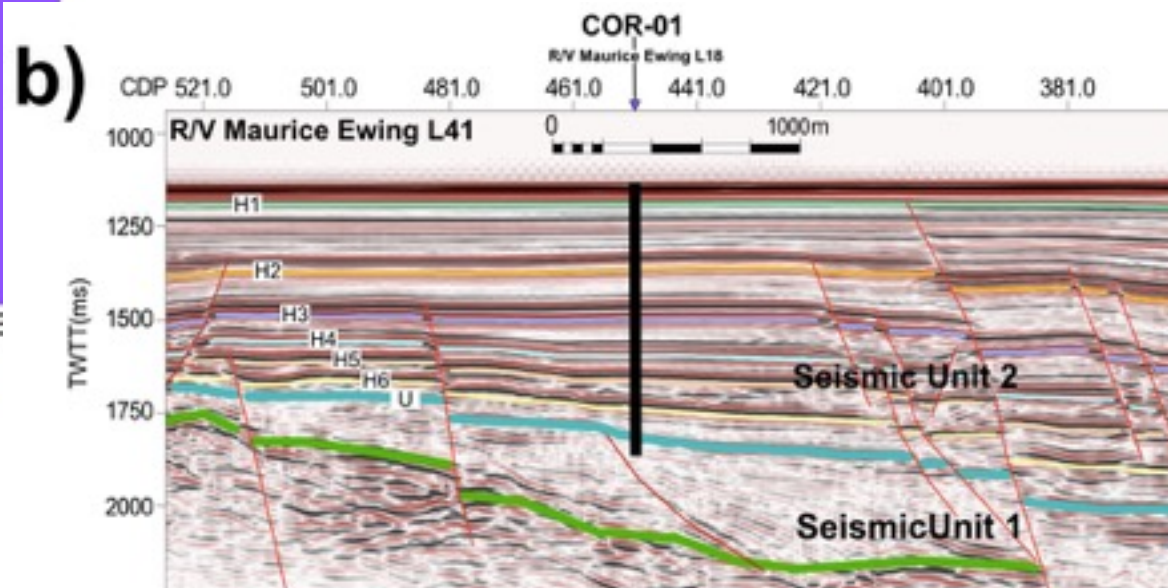
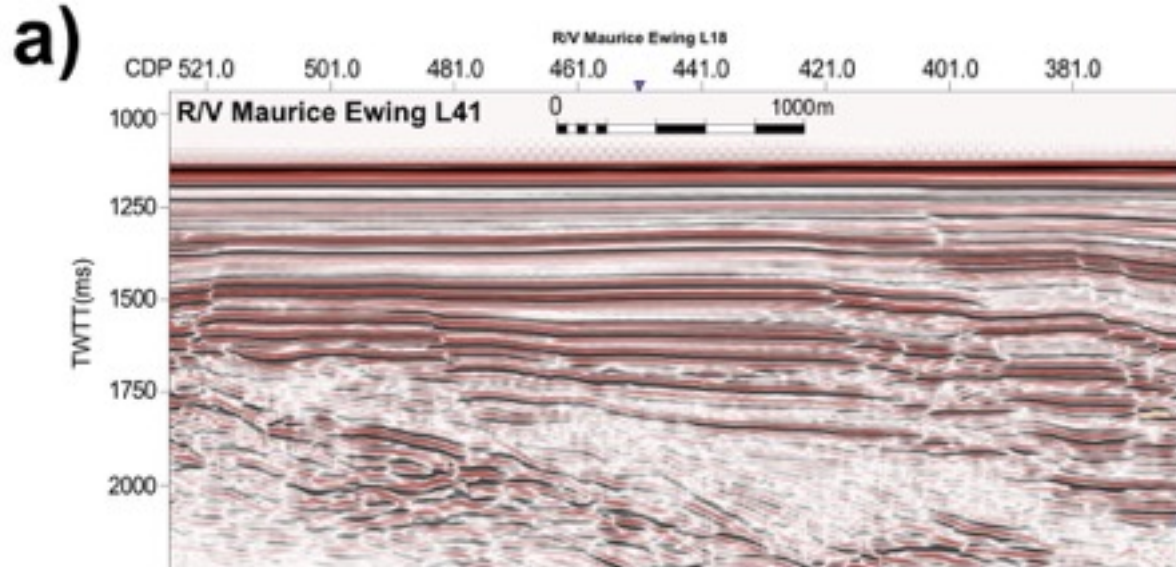
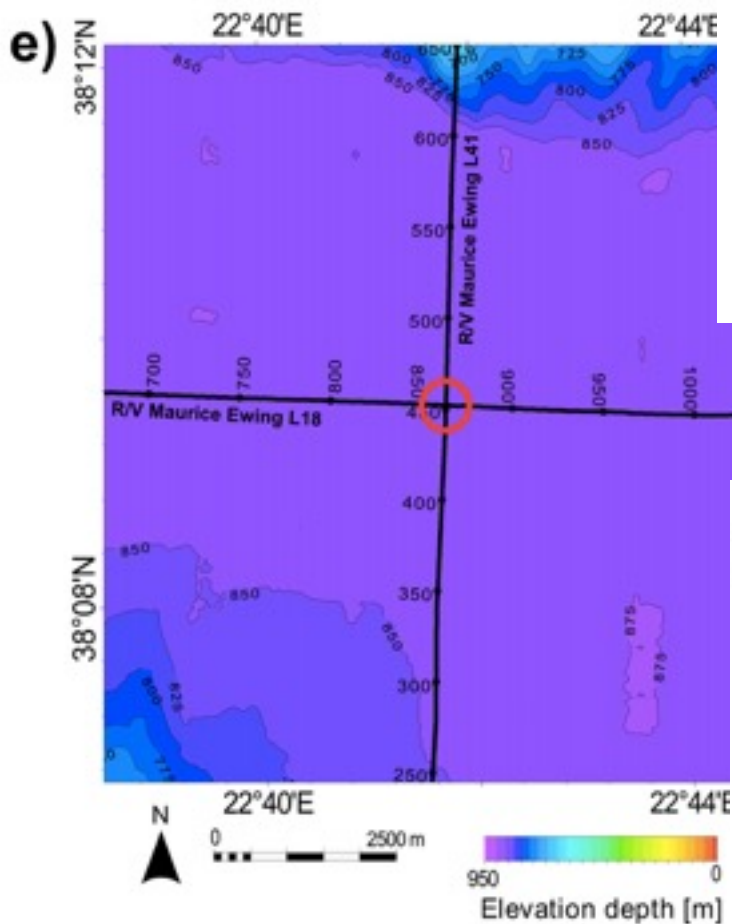
Jan., 2015: Full proposal (revision of earlier deactivated proposal) reviewed by SEP. Sent for external review.

May, 2016: e-review of Addendum. Forwarded to EFB with rating of excellent.

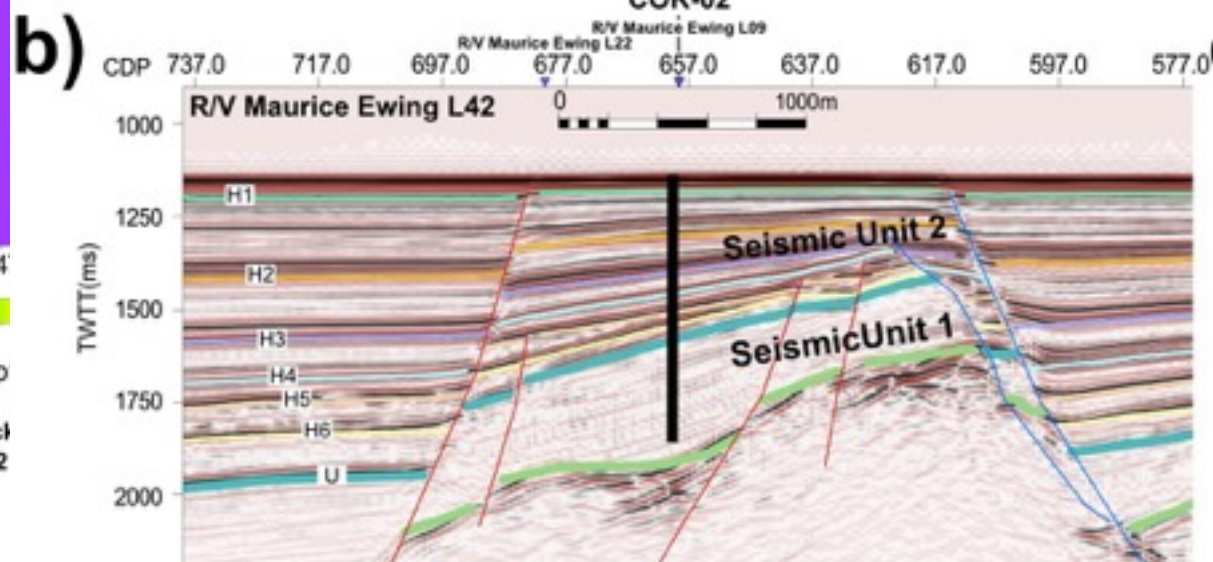
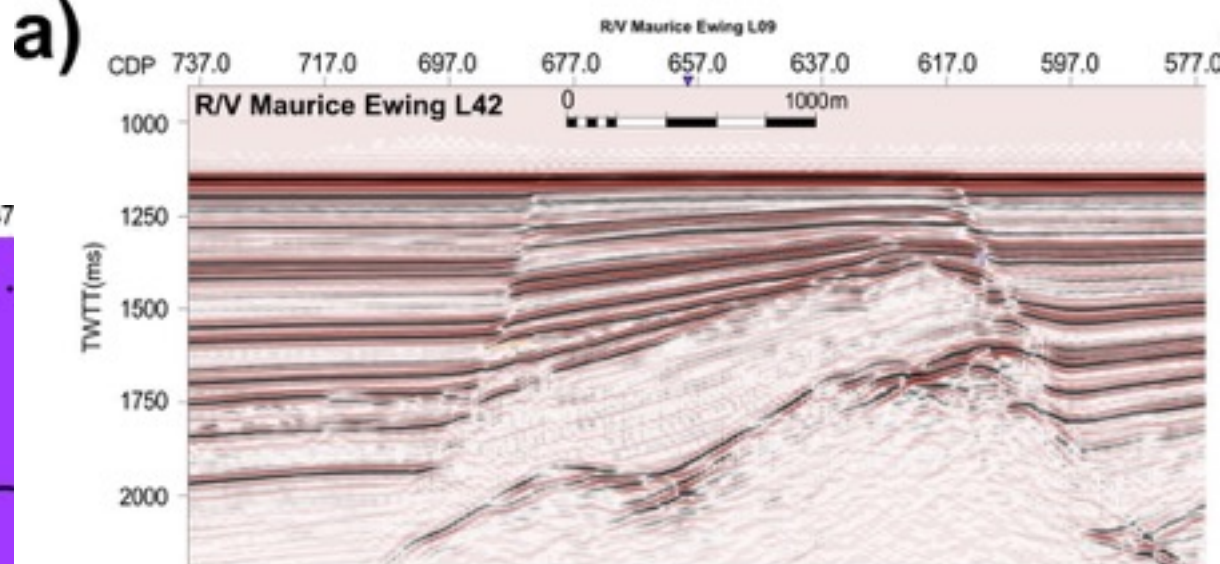
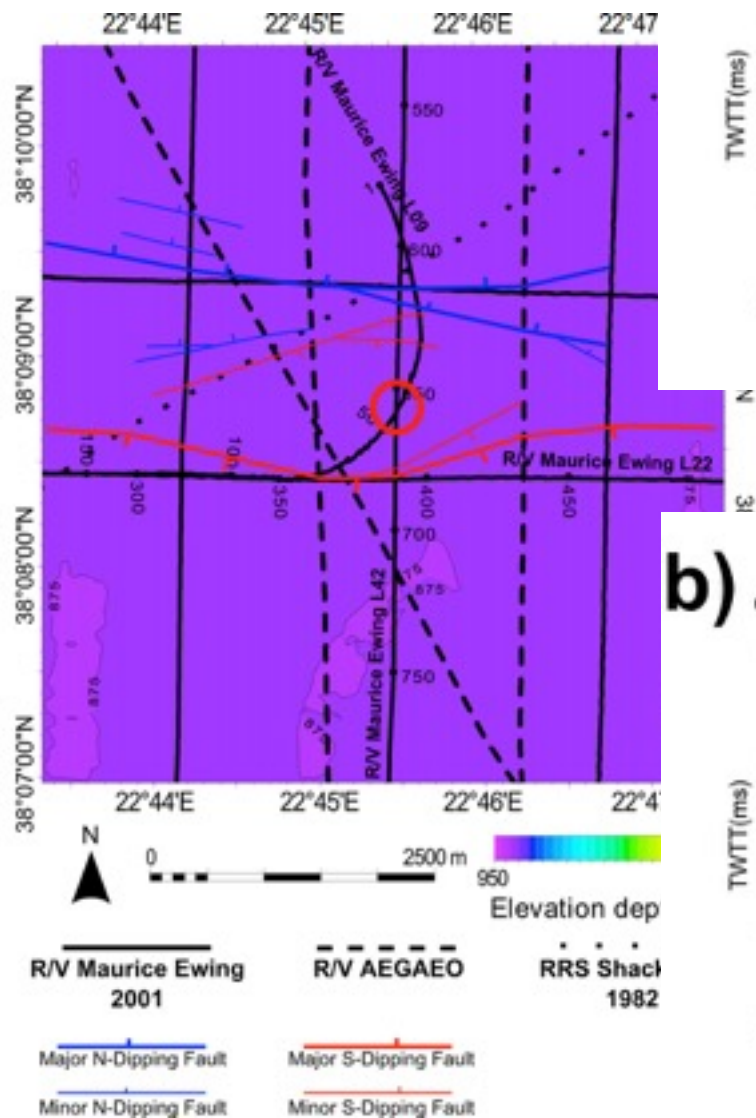
Available Data and Examples



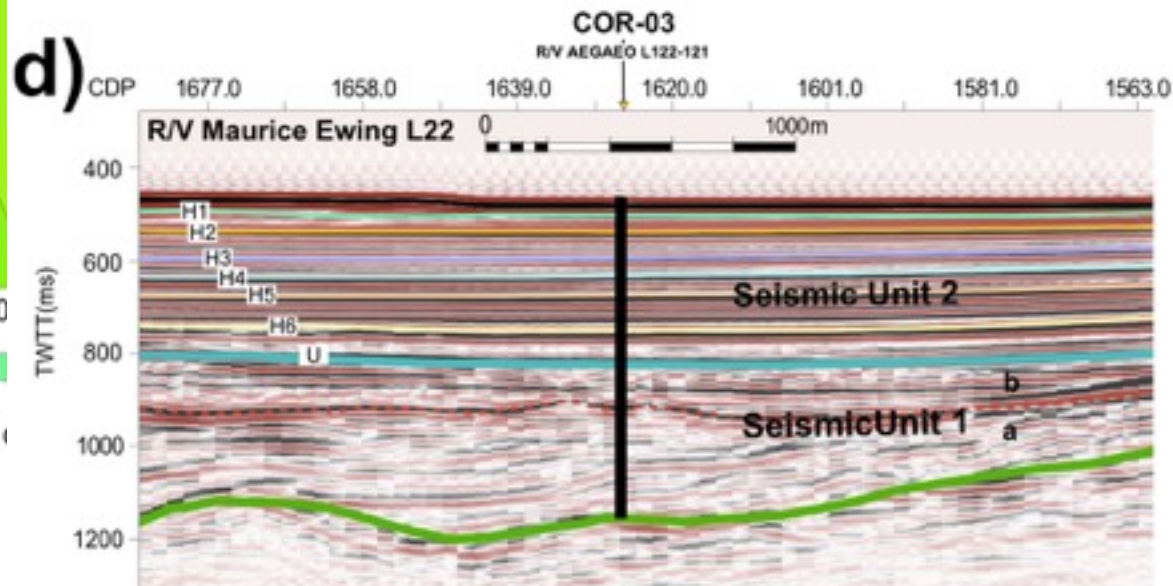
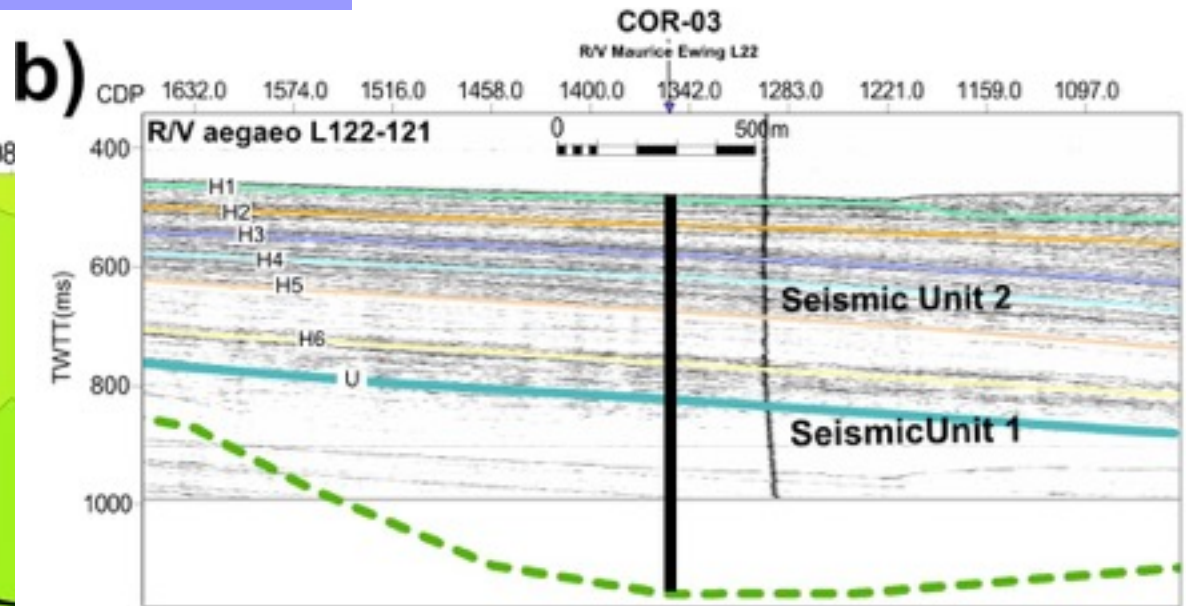
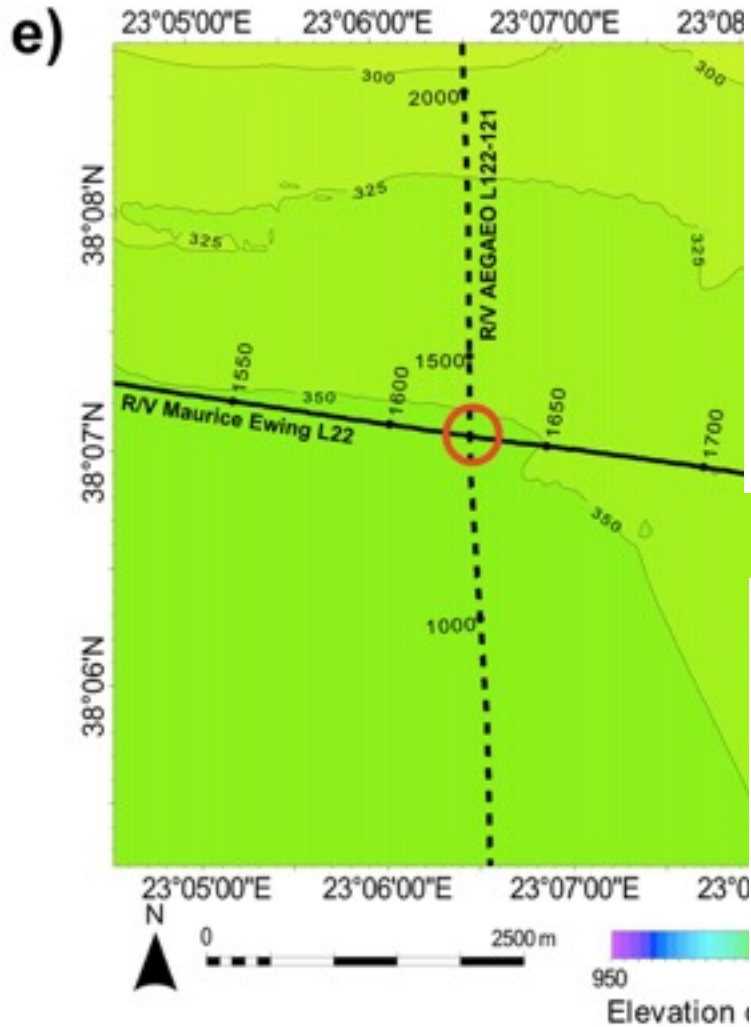
COR-01

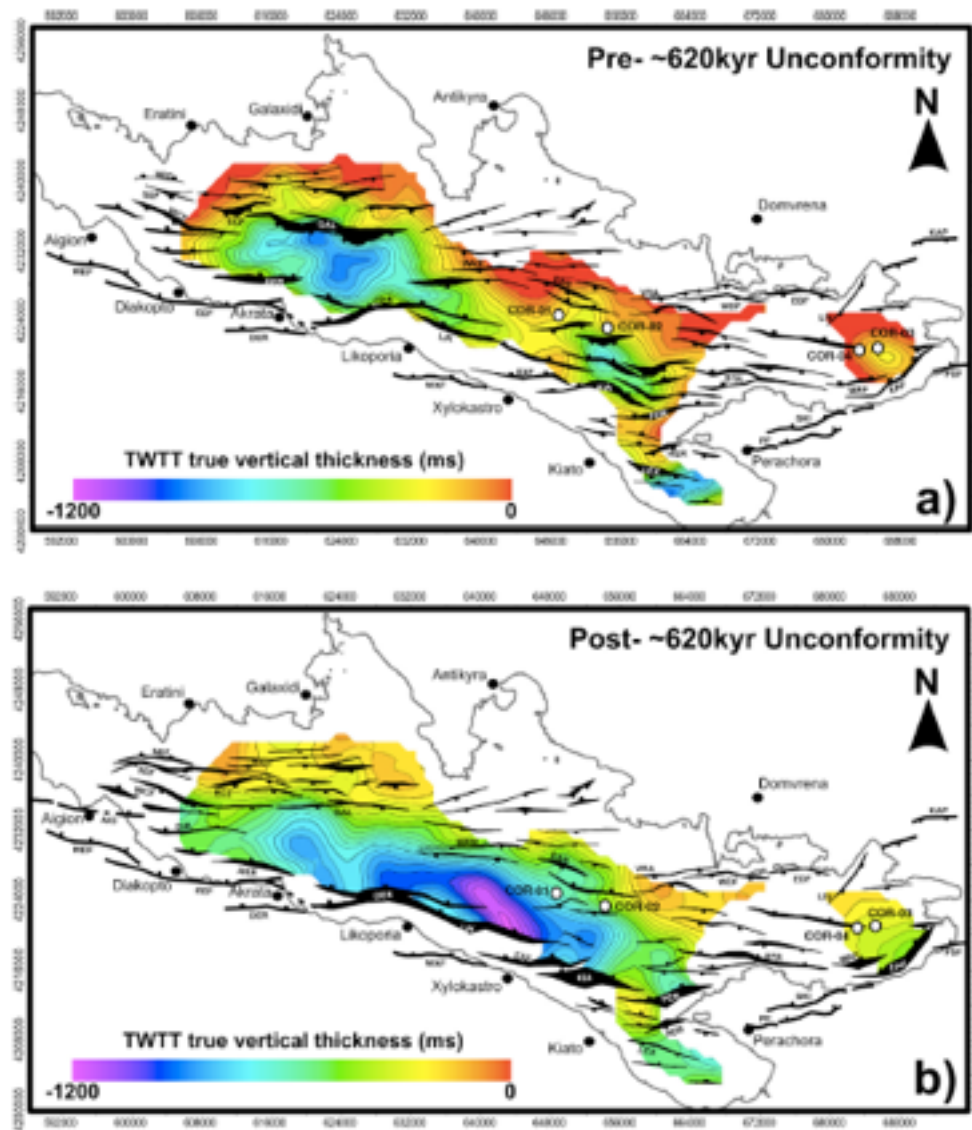


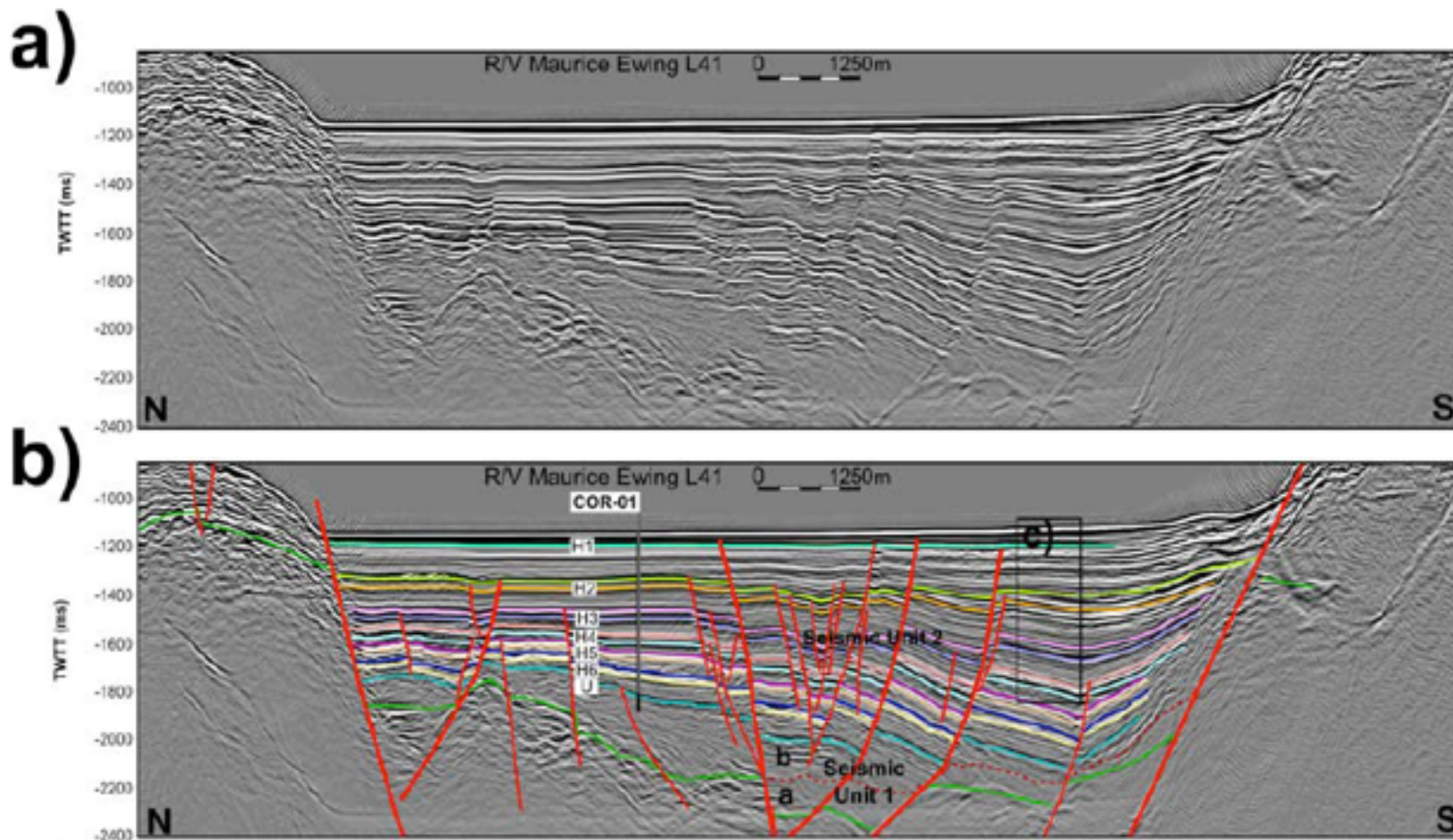
COR-02

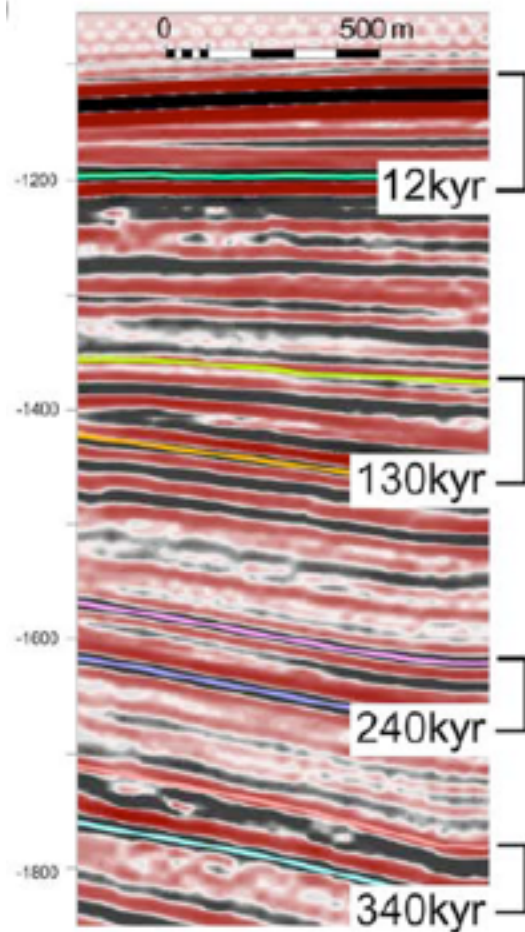


COR-03









High Amplitude Marine

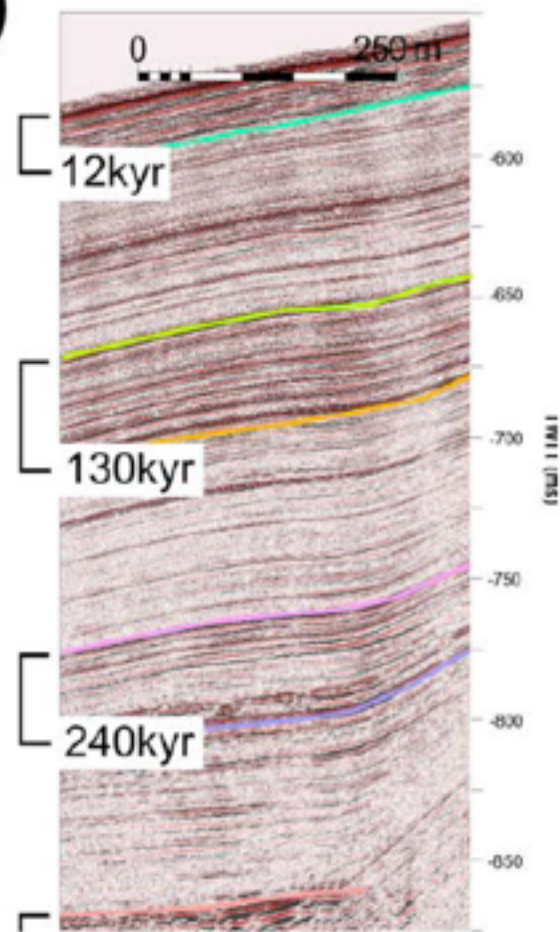
High Amplitude Marine

High Amplitude Marine

High Amplitude Marine

MCS - Air Gun
R/V Maurice Ewing 2001

a)



HiResMCS - 2000Hz Sparker
M.V. Vasilios 2003

Summary- Concerns

- *Concern: COR-03, COR-04 target not resolved on crossing lines.*
- *Addressed by response letter; targets are resolved on adjacent lines; may still be concern to EPSP?*
- Hole COR-03 penetrates high amplitude mound within SU1, which is not imaged on the crossing line due to attenuation.
- *Addressed by response letter; Proponents claim no evidence of gas based on amplitudes. EPSP issue.*

Remaining minor issues

- Slight mismatch between names on the site survey forms and the files names in the SDDB
- Navigation-file for line EWL_042 is missing
- Mislabeled file in SSDB: EwL22_COR-03.sgy is an exact copy of EwL22_COR-04.sgy.

New alternates: COR-5A and 6A

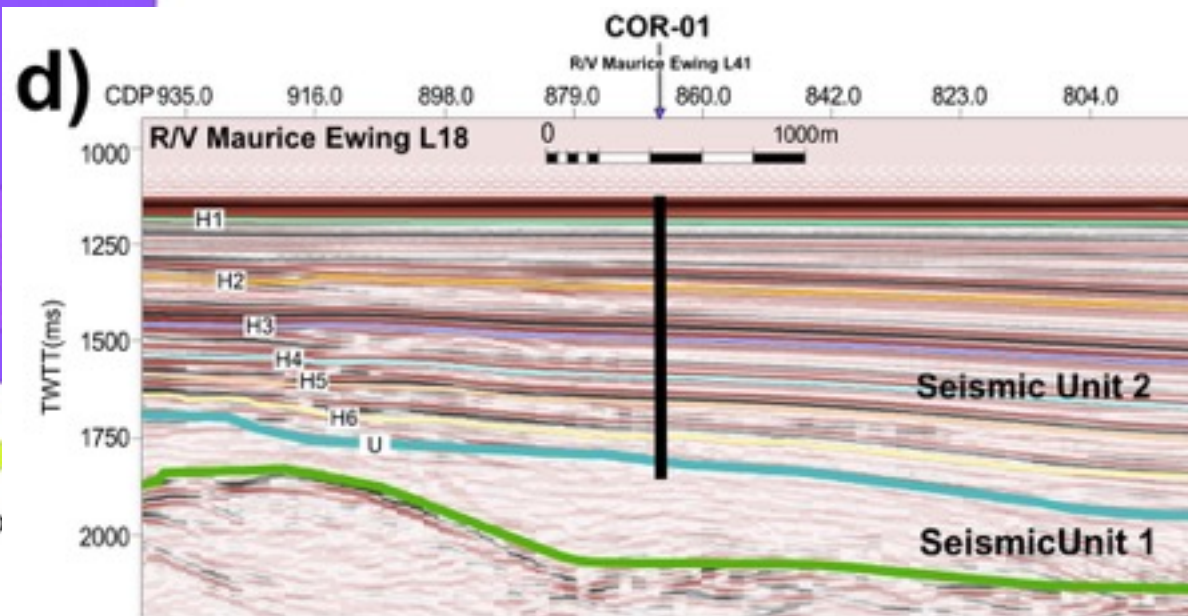
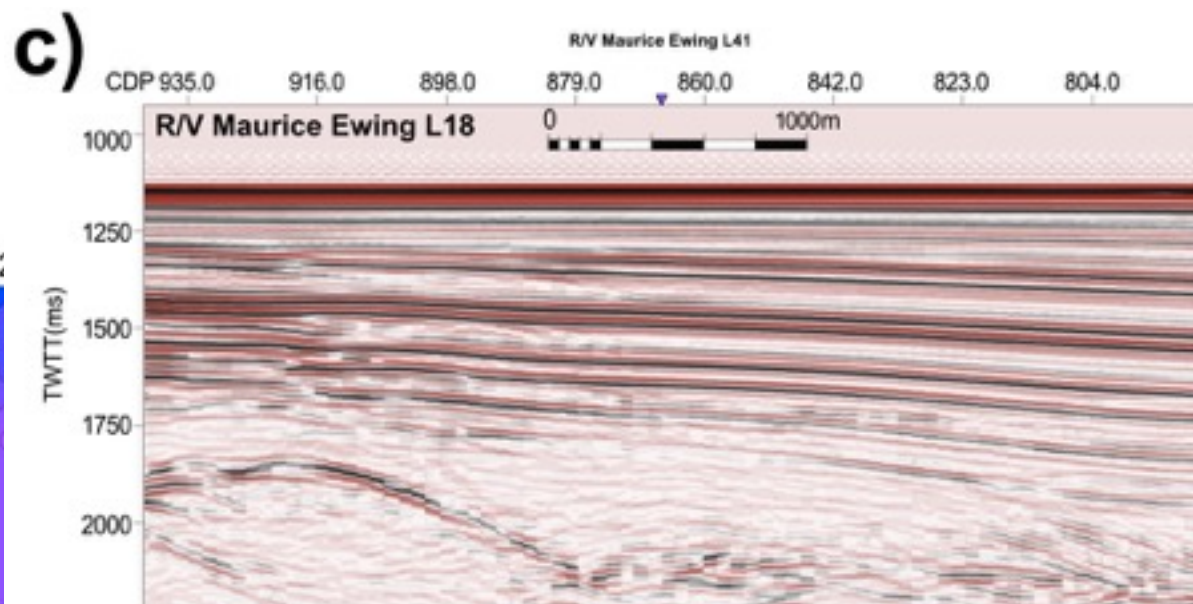
- Small inconsistency between the UTM navigation given in the SEGY-data and the geographical coordinates of CMPs given in a separate ASCII-file. E.g., the given location for site COR-05A is 38.2811, 22.4108. This site is located at Ewing L16, CDP 596 and Ewing L02, CDP 620, which corresponds to the navigation in the SEGY File. BUT, locations in the ASCII navigation files of Ewing L16, CDP 596 and EWING L02, CDP620 are:

L16: 38.283279	22.411310	596
L02: 38.280807	22.413787	620
- This is a misfit of a few hundred meters to the location given above. A similar misfit is observed for COR-06A. This issue needs to be addressed by the proponents.

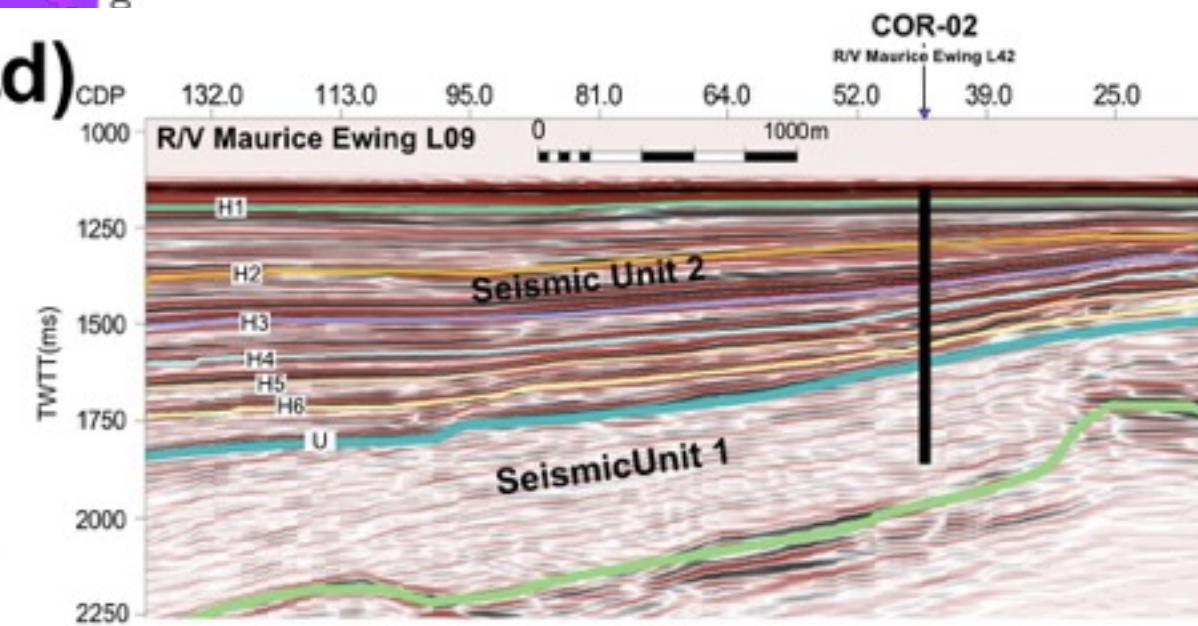
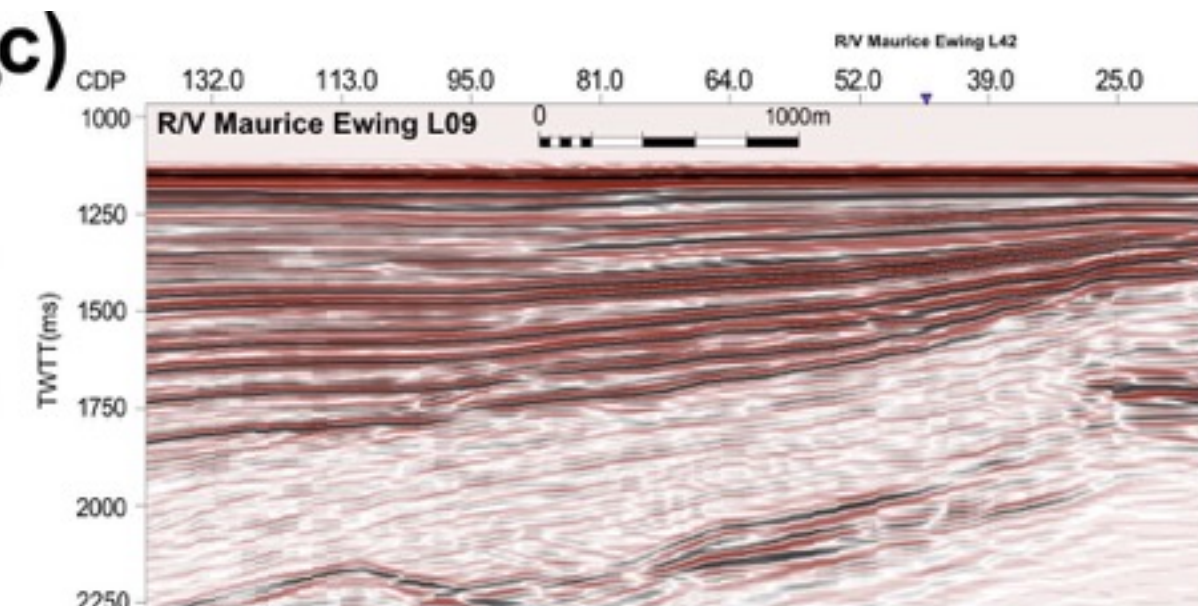
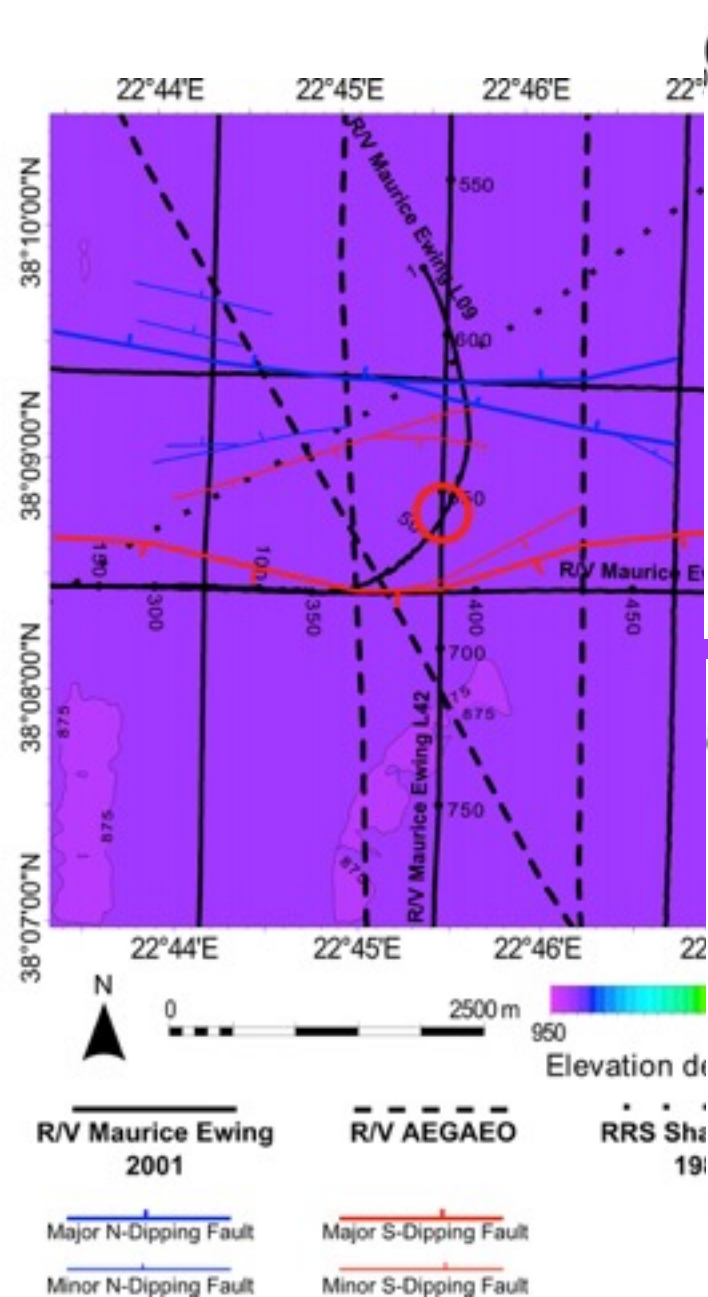
Site Survey Data Evaluation from previous review

Site	Latitude	Longitude	Water depth	Target depth	Classification
COR-01	38.157534	22.695709	852	750	1
COR-02	38.144942	22.758405	862	750	1
COR-03	38.157534	22.695709	347	740	2
COR-04 (alt to 03)	38.119675	23.089213	365	480	2
COR-05A (alt to 02)	38.28110	22.41080	529	750	2
COR-06A (alt to 01)	38.17580	22.7183	861	750	2

COR-01



COR-02



COR-04

